

Product datasheet for **TA343718**

ZBTB43 Rabbit Polyclonal Antibody

Product data:

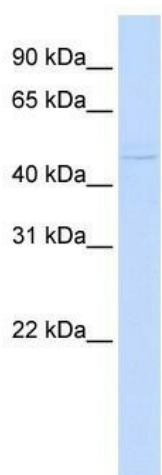
Product Type:	Primary Antibodies
Applications:	WB
Recommended Dilution:	WB
Reactivity:	Human
Host:	Rabbit
Isotype:	IgG
Clonality:	Polyclonal
Immunogen:	The immunogen for anti-ZBTB43 antibody: synthetic peptide directed towards the N terminal of human ZBTB43. Synthetic peptide located within the following region: EPGTNSFRVEFPDFSSSTILQKLNQQRQQGLCDVSIVVQGHIFRAHKAVL
Formulation:	Liquid. Purified antibody supplied in 1x PBS buffer with 0.09% (w/v) sodium azide and 2% sucrose. <i>Note that this product is shipped as lyophilized powder to China customers.</i>
Purification:	Affinity Purified
Conjugation:	Unconjugated
Storage:	Store at -20°C as received.
Stability:	Stable for 12 months from date of receipt.
Predicted Protein Size:	53 kDa
Gene Name:	zinc finger and BTB domain containing 43
Database Link:	NP_054726 Entrez Gene 23099 Human O43298
Background:	ZBTB43 belongs to the krueppel C2H2-type zinc-finger protein family. It contains 1 BTB (POZ) domain and 3 C2H2-type zinc fingers. ZBTB43 may be involved in transcriptional regulation.
Synonyms:	ZBTB22B; ZNF-X; ZNF297B
Note:	Immunogen Sequence Homology: Dog: 100%; Pig: 100%; Rat: 100%; Horse: 100%; Human: 100%; Mouse: 100%; Bovine: 100%; Rabbit: 100%; Guinea pig: 100%; Yeast: 90%



[View online »](#)

Protein Families: Transcription Factors

Product images:



WB Suggested Anti-ZBTB43 Antibody Titration:
0.2-1 ug/ml; ELISA Titer: 1: 312500; Positive
Control: Human Placenta