

Product datasheet for **TA343717**

AP4 (REPIN1) Rabbit Polyclonal Antibody

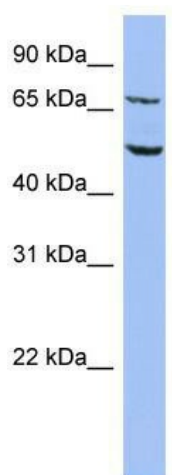
Product data:

Product Type:	Primary Antibodies
Applications:	WB
Recommended Dilution:	WB
Reactivity:	Human
Host:	Rabbit
Isotype:	IgG
Clonality:	Polyclonal
Immunogen:	The immunogen for anti-REPIN1 antibody: synthetic peptide directed towards the middle region of human REPIN1. Synthetic peptide located within the following region: VSHRRIHTGERPYACPDCDRSFSQKSNLITHRKSHIRDGAFCCAICGQTF
Formulation:	Liquid. Purified antibody supplied in 1x PBS buffer with 0.09% (w/v) sodium azide and 2% sucrose.
Purification:	Affinity Purified
Conjugation:	Unconjugated
Storage:	Store at -20°C as received.
Stability:	Stable for 12 months from date of receipt.
Predicted Protein Size:	63 kDa
Gene Name:	replication initiator 1
Database Link:	NP_037532 Entrez Gene 29803 Human Q9BWE0
Background:	Sequence-specific double-stranded DNA-binding protein required for initiation of chromosomal DNA replication. REPIN1 binds on 5'-ATT-3' reiterated sequences downstream of the origin of bidirectional replication (OBR) and a second, homologous ATT sequence
Synonyms:	AP4; RIP60; Zfp464; ZNF464
Note:	Immunogen Sequence Homology: Dog: 100%; Rat: 100%; Horse: 100%; Human: 100%; Mouse: 100%; Bovine: 100%; Rabbit: 100%; Pig: 91%; Guinea pig: 91%



[View online »](#)

Product images:



WB Suggested Anti-REPIN1 Antibody Titration:
0.2-1 ug/ml; ELISA Titer: 1: 312500; Positive
Control: HT1080 cell lysate; REPIN1 is supported
by BioGPS gene expression data to be expressed
in HT1080