

Product datasheet for **TA343716**

zinc finger protein 112 (ZNF112) Rabbit Polyclonal Antibody

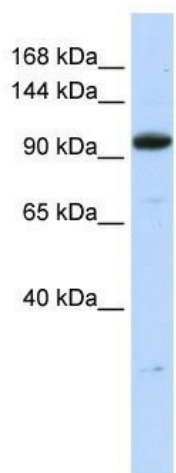
Product data:

Product Type:	Primary Antibodies
Applications:	WB
Recommended Dilution:	WB
Reactivity:	Human
Host:	Rabbit
Isotype:	IgG
Clonality:	Polyclonal
Immunogen:	The immunogen for anti-ZNF228 antibody: synthetic peptide directed towards the N terminal of human ZNF228. Synthetic peptide located within the following region: VTFKDVAVVFTEELGLLDVQRKLYRDVMLENFRNLLLVAHQPFKPDLI
Formulation:	Liquid. Purified antibody supplied in 1x PBS buffer with 0.09% (w/v) sodium azide and 2% sucrose.
Purification:	Affinity Purified
Conjugation:	Unconjugated
Storage:	Store at -20°C as received.
Stability:	Stable for 12 months from date of receipt.
Predicted Protein Size:	105 kDa
Gene Name:	zinc finger protein 112
Database Link:	NP_037512 Entrez Gene 7771 Human Q9UJU3
Background:	ZNF228 contains 1 KRAB domain. The function of ZNF228 remains unknown.
Synonyms:	ZFP112; ZNF228
Note:	Immunogen Sequence Homology: Human: 100%; Dog: 93%; Pig: 93%; Rat: 93%; Bovine: 93%; Horse: 92%; Mouse: 85%
Protein Families:	Transcription Factors



[View online »](#)

Product images:



WB Suggested Anti-ZNF228 Antibody Titration:
0.2-1 ug/ml; ELISA Titer: 1: 62500; Positive
Control: MCF7 cell lysate