

## Product datasheet for **TA343715**

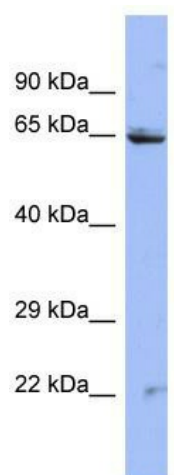
### ZNF284 Rabbit Polyclonal Antibody

#### Product data:

Product Type:	Primary Antibodies
Applications:	WB
Recommended Dilution:	WB
Reactivity:	Human
Host:	Rabbit
Isotype:	IgG
Clonality:	Polyclonal
Immunogen:	The immunogen for Anti-ZNF284 antibody is: synthetic peptide directed towards the N-terminal region of Human ZNF284. Synthetic peptide located within the following region: KDVAVVFTEELGLLDVSRKLYRDVMLENFRNLLSVGHQLSHRDTFHFQ
Formulation:	Liquid. Purified antibody supplied in 1x PBS buffer with 0.09% (w/v) sodium azide and 2% sucrose.
Purification:	Affinity Purified
Conjugation:	Unconjugated
Storage:	Store at -20°C as received.
Stability:	Stable for 12 months from date of receipt.
Predicted Protein Size:	65 kDa
Gene Name:	zinc finger protein 284
Database Link:	<a href="#">NP_001032902</a> <a href="#">Entrez Gene 342909 Human</a> <a href="#">Q2VY69</a>
Background:	ZNF284 may be involved in transcriptional regulation.
Synonyms:	ZNF284L
Note:	Immunogen Sequence Homology: Human: 100%; Pig: 93%; Bovine: 93%; Rabbit: 92%; Dog: 86%; Rat: 86%; Horse: 85%; Mouse: 85%



[View online »](#)

**Product images:**


Host: Rabbit; Target Name: ZNF284; Sample  
Tissue: HT1080 Whole cell lysates; Antibody  
Dilution: 1.0 ug/ml