

Product datasheet for **TA343710**

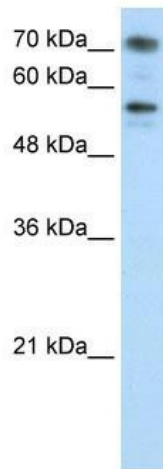
BRD7 Rabbit Polyclonal Antibody

Product data:

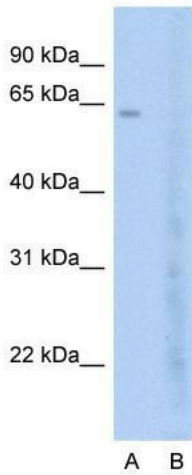
| | |
|-------------------------|---|
| Product Type: | Primary Antibodies |
| Applications: | WB |
| Recommended Dilution: | WB |
| Reactivity: | Human |
| Host: | Rabbit |
| Isotype: | IgG |
| Clonality: | Polyclonal |
| Immunogen: | The immunogen for anti-BRD7 antibody: synthetic peptide directed towards the C terminal of human BRD7. Synthetic peptide located within the following region: KELAQQVTPGDIVSTYGVRKAMGISIPSPVMENNFVDLTEDTEEPKKTDV |
| Formulation: | Liquid. Purified antibody supplied in 1x PBS buffer with 0.09% (w/v) sodium azide and 2% sucrose. <i>Note that this product is shipped as lyophilized powder to China customers.</i> |
| Purification: | Affinity Purified |
| Conjugation: | Unconjugated |
| Storage: | Store at -20°C as received. |
| Stability: | Stable for 12 months from date of receipt. |
| Predicted Protein Size: | 74 kDa |
| Gene Name: | bromodomain containing 7 |
| Database Link: | NP_037395 Entrez Gene 29117 Human Q9NPI1 |
| Background: | BRD7 is an activator of the Wnt signaling pathway in a DVL1-dependent manner by negatively regulating the GSK3B phosphotransferase activity. It induces dephosphorylation of GSK3B at 'Tyr-216'. |
| Synonyms: | BP75; CELTIX1; NAG4 |
| Note: | Immunogen Sequence Homology: Human: 100%; Pig: 93%; Guinea pig: 93%; Dog: 86%; Rat: 86%; Horse: 79%; Rabbit: 79% |



[View online »](#)

Product images:


WB Suggested Anti-BRD7 Antibody Titration: 0.2-1 ug/ml; Positive Control: Jurkat cell lysate; BRD7 is supported by BioGPS gene expression data to be expressed in Jurkat


Anti-BRD7 Western Blot & Peptide Block Validation

Lysate: Jurkat Cell

Lane A: Primary Antibody
Lane B: Primary Antibody + Blocking Peptide

Primary Antibody Concentration: 2.0µg/ml
Peptide Concentration: 2.0µg/ml
Lysate Quantity: 25µg/lane
Gel Concentration: 12%

Host: Rabbit; Target Name: BRD7; Sample Tissue: Jurkat; Lane A: Primary Antibody; Lane B: Primary Antibody + Blocking Peptide; Primary Antibody Concentration: 2.5 ug/mL; Peptide Concentration: 2.0 ug/mL; Lysate Quantity: 25 ug/lane; Gel Concentration: 12%