

Product datasheet for **TA343708**

PGC1 alpha (PPARGC1A) Rabbit Polyclonal Antibody

Product data:

Product Type:	Primary Antibodies
Applications:	WB
Recommended Dilution:	WB
Reactivity:	Human, Mouse, Rat
Host:	Rabbit
Isotype:	IgG
Clonality:	Polyclonal
Immunogen:	The immunogen for anti-PPARGC1A antibody: synthetic peptide directed towards the N terminal of human PPARGC1A. Synthetic peptide located within the following region: MAWDMCNQDSESVWSDIECAALVGEDQPLCPDLPELDLSELDVNDLDTDS
Formulation:	Liquid. Purified antibody supplied in 1x PBS buffer with 0.09% (w/v) sodium azide and 2% sucrose. <i>Note that this product is shipped as lyophilized powder to China customers.</i>
Purification:	Affinity Purified
Conjugation:	Unconjugated
Storage:	Store at -20°C as received.
Stability:	Stable for 12 months from date of receipt.
Predicted Protein Size:	91 kDa
Gene Name:	PPARG coactivator 1 alpha
Database Link:	NP_037393 Entrez Gene 19017 Mouse Entrez Gene 83516 Rat Entrez Gene 10891 Human Q9UBK2



[View online »](#)

Background:

The protein encoded by this gene is a transcriptional coactivator that regulates the genes involved in energy metabolism. This protein interacts with PPARgamma, which permits the interaction of this protein with multiple transcription factors. This protein can interact with, and regulate the activities of, cAMP response element binding protein (CREB) and nuclear respiratory factors (NRFs). It provides a direct link between external physiological stimuli and the regulation of mitochondrial biogenesis, and is a major factor that regulates muscle fiber type determination. This protein may be also involved in controlling blood pressure, regulating cellular cholesterol homeostasis, and the development of obesity.

Synonyms:

LEM6; PGC-1(alpha); PGC-1alpha; PGC-1v; PGC1; PGC1A; PPARGC1

Note:

Immunogen Sequence Homology: Dog: 100%; Pig: 100%; Rat: 100%; Goat: 100%; Horse: 100%; Human: 100%; Mouse: 100%; Bovine: 100%; Rabbit: 100%; Guinea pig: 100%; Zebrafish: 90%

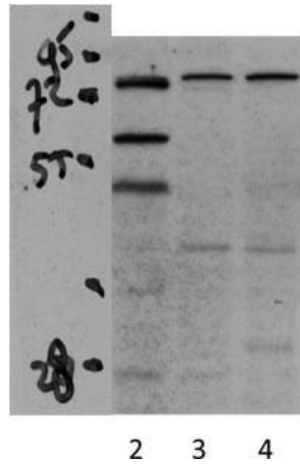
Protein Families:

Druggable Genome, Transcription Factors

Protein Pathways:

Adipocytokine signaling pathway, Huntington's disease, Insulin signaling pathway

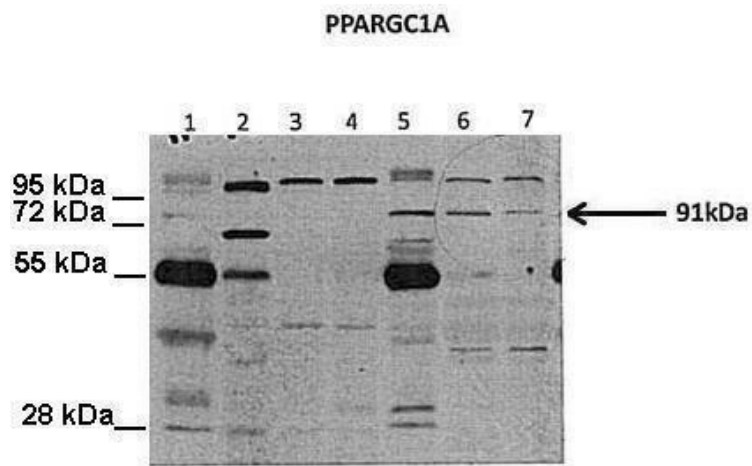
Product images:



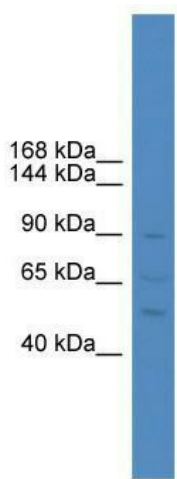
PPARGC1A antibody - N-terminal region validated by WB using transfected SH-SY5Y lysate at 1:15000.



PPARGC1A antibody - N-terminal region validated by WB using Transfected Melanoma Cell at 1:1000.



Lanes: Lane 1: 30 ug Human liver; Lane 2: 30 ug Rat liver; Lane 3: 30 ug Mouse (wild-type) liver; Lane 4: 30 ug Mouse [AMPK alpha 1/2 (-/-)] liver; Lane 5: 30 ug Human muscle; Lane 6: 30 ug Rat muscle; Lane 7: 30 ug Mouse muscle; Primary Antibody Dilution: 1: 100



WB Suggested Anti-PPARGC1A Antibody Titration: 0.2-1 ug/ml; ELISA Titer: 1: 312500; Positive Control: ACHN cell lysate