

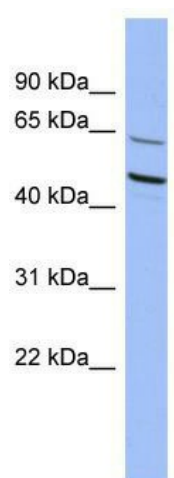
## Product datasheet for **TA343706**

### ZNF215 Rabbit Polyclonal Antibody

#### Product data:

Product Type:	Primary Antibodies
Applications:	WB
Recommended Dilution:	WB
Reactivity:	Human
Host:	Rabbit
Isotype:	IgG
Clonality:	Polyclonal
Immunogen:	The immunogen for anti-ZNF215 antibody: synthetic peptide directed towards the N terminal of human ZNF215. Synthetic peptide located within the following region: MQPLSKLMAISKPRNLSLREQREVLADMSSWQQETNPVETHDSEASRQK
Formulation:	Liquid. Purified antibody supplied in 1x PBS buffer with 0.09% (w/v) sodium azide and 2% sucrose.
Purification:	Affinity Purified
Conjugation:	Unconjugated
Storage:	Store at -20°C as received.
Stability:	Stable for 12 months from date of receipt.
Predicted Protein Size:	60 kDa
Gene Name:	zinc finger protein 215
Database Link:	<a href="#">NP_037382</a> <a href="#">Entrez Gene 7762 Human</a> <a href="#">Q9UL58</a>
Background:	ZNF215 may be involved in transcriptional regulation.
Synonyms:	BAZ-2; BAZ2; ZKSCAN11; ZSCAN43
Note:	Immunogen Sequence Homology: Human: 100%
Protein Families:	Transcription Factors


[View online »](#)

**Product images:**


WB Suggested Anti-ZNF215 Antibody Titration:  
 0.2-1 ug/ml; ELISA Titer: 1: 1562500; Positive  
 Control: THP-1 cell lysate