

Product datasheet for **TA343702**

RLF Rabbit Polyclonal Antibody

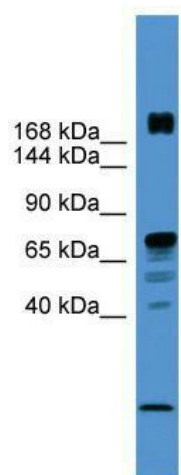
Product data:

Product Type:	Primary Antibodies
Applications:	WB
Recommended Dilution:	WB
Reactivity:	Human
Host:	Rabbit
Isotype:	IgG
Clonality:	Polyclonal
Immunogen:	The immunogen for anti-RLF antibody: synthetic peptide directed towards the N terminal of human RLF. Synthetic peptide located within the following region: AVAGAGDGVETESMVRGHRPVSPAPGASGLRPCLWQLETELREQEVSEVS
Formulation:	Liquid. Purified antibody supplied in 1x PBS buffer with 0.09% (w/v) sodium azide and 2% sucrose. <i>Note that this product is shipped as lyophilized powder to China customers.</i>
Purification:	Affinity Purified
Conjugation:	Unconjugated
Storage:	Store at -20°C as received.
Stability:	Stable for 12 months from date of receipt.
Predicted Protein Size:	218 kDa
Gene Name:	rearranged L-myc fusion
Database Link:	NP_036553 Entrez Gene 6018 Human Q13129
Background:	RLF may be involved in transcriptional regulation.
Synonyms:	ZN-15L; ZNF292L
Note:	Immunogen Sequence Homology: Human: 100%; Pig: 86%; Bovine: 86%; Dog: 85%; Guinea pig: 79%



[View online »](#)

Product images:



WB Suggested Anti-RLF Antibody Titration: 0.2-1 ug/ml; ELISA Titer: 1: 62500; Positive Control: PANC1 cell lysate