

## Product datasheet for **TA343701**

### SPDEF Rabbit Polyclonal Antibody

#### Product data:

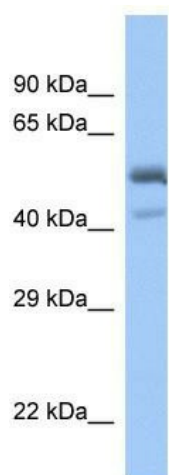
Product Type:	Primary Antibodies
Applications:	WB
Recommended Dilution:	WB
Reactivity:	Human
Host:	Rabbit
Isotype:	IgG
Clonality:	Polyclonal
Immunogen:	The immunogen for anti-SPDEF antibody: synthetic peptide directed towards the C terminal of human SPDEF. Synthetic peptide located within the following region: FKIEDSAQVARLWGIKRNRPAMNYDKLSRSIRQYYKGIIRKPDISQRLV
Formulation:	Liquid. Purified antibody supplied in 1x PBS buffer with 0.09% (w/v) sodium azide and 2% sucrose. <i>Note that this product is shipped as lyophilized powder to China customers.</i>
Purification:	Affinity Purified
Conjugation:	Unconjugated
Storage:	Store at -20°C as received.
Stability:	Stable for 12 months from date of receipt.
Predicted Protein Size:	37 kDa
Gene Name:	SAM pointed domain containing ETS transcription factor
Database Link:	<a href="#">NP_036523</a> <a href="#">Entrez Gene 25803 Human</a> <a href="#">O95238</a>
Background:	PDEF is an ETS transcription factor expressed in prostate epithelial cells. It acts as an androgen-independent transactivator of PSA expression.
Synonyms:	bA375E1.3; PDEF
Note:	Immunogen Sequence Homology: Dog: 100%; Pig: 100%; Rat: 100%; Horse: 100%; Human: 100%; Mouse: 100%; Bovine: 100%; Rabbit: 100%; Zebrafish: 100%; Guinea pig: 100%



[View online »](#)

Protein Families: Transcription Factors

**Product images:**



WB Suggested Anti-SPDEF Antibody; Titration: 1.0 ug/ml; Positive Control: Fetal Muscle