

Product datasheet for **TA343700**

GMEB2 Rabbit Polyclonal Antibody

Product data:

Product Type:	Primary Antibodies
Applications:	IHC, WB
Recommended Dilution:	WB, IHC
Reactivity:	Human
Host:	Rabbit
Isotype:	IgG
Clonality:	Polyclonal
Immunogen:	The immunogen for anti-GMEB2 antibody: synthetic peptide directed towards the C terminal of human GMEB2. Synthetic peptide located within the following region: PGLGPTLQNVAQASPGSSTIVTPAGAAPGPEEHTATIEVAAMAEDHERK
Formulation:	Liquid. Purified antibody supplied in 1x PBS buffer with 0.09% (w/v) sodium azide and 2% sucrose.
Purification:	Protein A purified
Conjugation:	Unconjugated
Storage:	Store at -20°C as received.
Stability:	Stable for 12 months from date of receipt.
Predicted Protein Size:	56 kDa
Gene Name:	glucocorticoid modulatory element binding protein 2
Database Link:	NP_036516 Entrez Gene 26205 Human Q9UKD1



[View online »](#)

Background:

GMEB2 is a member of KDWK family. GMEB2 associates with GMEB1 protein, and the complex is essential for parvovirus DNA replication. Study of rat homolog implicates the role of this gene in modulation of transactivation by the glucocorticoid receptor bound to glucocorticoid response elements. This gene is a member of KDWK gene family. The product of this gene associates with GMEB1 protein, and the complex is essential for parvovirus DNA replication. Study of rat homolog implicates the role of this gene in modulation of transactivation by the glucocorticoid receptor bound to glucocorticoid response elements. This gene appears to use multiple polyadenylation sites.

Synonyms:

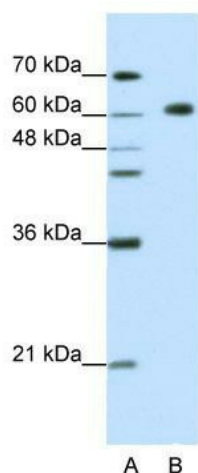
GMEB-2; P79PIF; PIF79

Note:

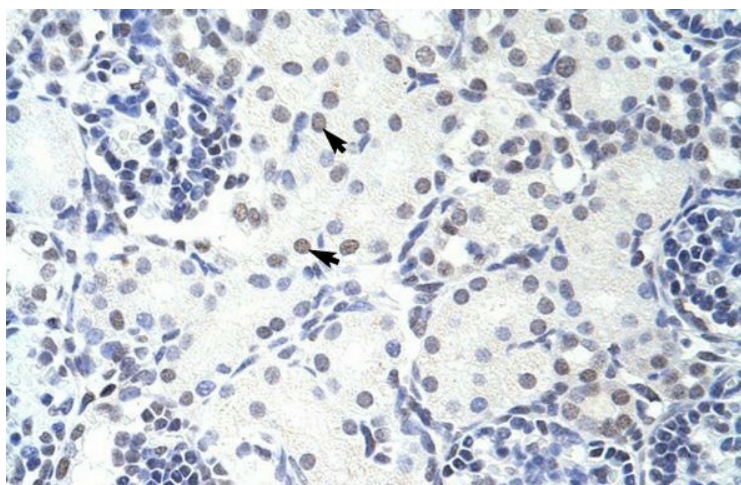
Immunogen Sequence Homology: Human: 100%; Pig: 93%; Guinea pig: 93%; Dog: 86%; Rat: 86%; Mouse: 86%; Bovine: 86%; Rabbit: 86%; Horse: 79%

Protein Families:

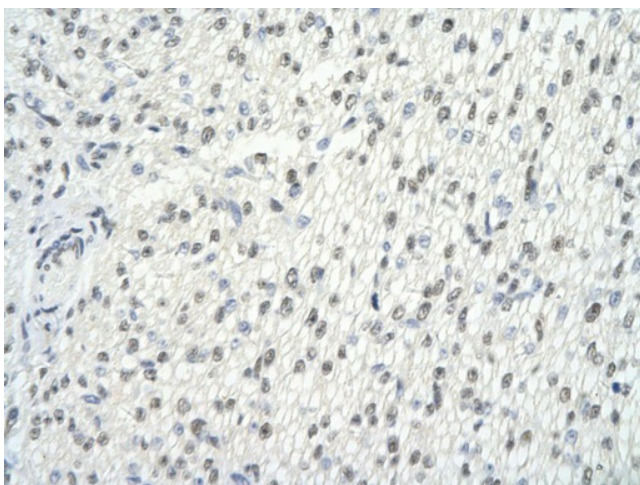
Druggable Genome, Transcription Factors

Product images:


WB Suggested Anti-GMEB2 Antibody Titration: 1.25 ug/ml; ELISA Titer: 1: 312500; Positive Control: HepG2 cell lysate; GMEB2 is strongly supported by BioGPS gene expression data to be expressed in Human HepG2 cells



Human kidney



Rabbit Anti-GMEB2 antibody; Paraffin Embedded Tissue: Human Heart cell Cellular Data: cardiac cell of renal tubule; Antibody Concentration: 4.0-8.0 ug/ml; Magnification: 400X