

Product datasheet for **TA343699**

NFAT1 (NFATC2) Rabbit Polyclonal Antibody

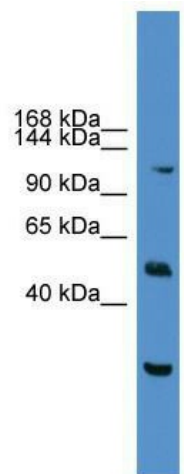
Product data:

Product Type:	Primary Antibodies
Applications:	IHC, WB
Recommended Dilution:	WB, IHC
Reactivity:	Human, Mouse
Host:	Rabbit
Isotype:	IgG
Clonality:	Polyclonal
Immunogen:	The immunogen for anti-NFATC2 antibody: synthetic peptide directed towards the C terminal of human NFATC2. Synthetic peptide located within the following region: PTVIQQNATSQRAAKNGPPVSDQKEVLPAGVTIKQEQLDQTYLDDVNE
Formulation:	Liquid. Purified antibody supplied in 1x PBS buffer with 0.09% (w/v) sodium azide and 2% sucrose. <i>Note that this product is shipped as lyophilized powder to China customers.</i>
Purification:	Affinity Purified
Conjugation:	Unconjugated
Storage:	Store at -20°C as received.
Stability:	Stable for 12 months from date of receipt.
Predicted Protein Size:	100 kDa
Gene Name:	nuclear factor of activated T-cells 2
Database Link:	NP_775114 Entrez Gene 18019 Mouse Entrez Gene 4773 Human Q13469

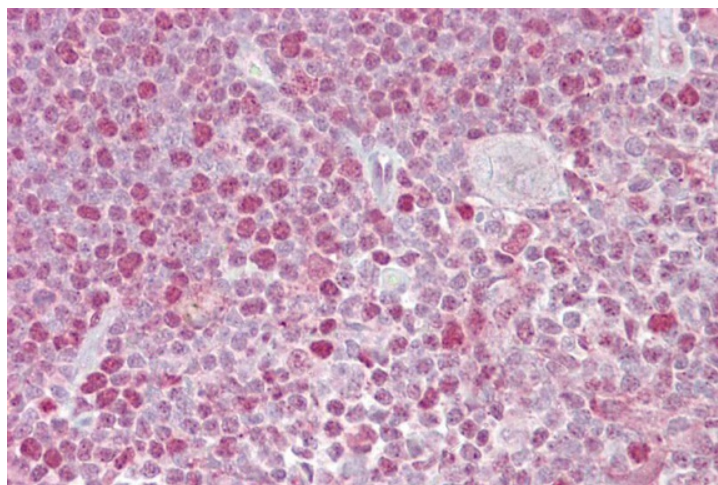


[View online »](#)

Background:	This gene is a member of the nuclear factor of activated T cells (NFAT) family. The product of this gene is a DNA-binding protein with a REL-homology region (RHR) and an NFAT-homology region (NHR). This protein is present in the cytosol and only translocates to the nucleus upon T cell receptor (TCR) stimulation, where it becomes a member of the nuclear factors of activated T cells transcription complex. This complex plays a central role in inducing gene transcription during the immune response. Alternate transcriptional splice variants, encoding different isoforms, have been characterized.
Synonyms:	NFAT1; NFATP
Note:	Immunogen Sequence Homology: Dog: 100%; Pig: 100%; Rat: 100%; Horse: 100%; Human: 100%; Mouse: 100%; Rabbit: 100%; Guinea pig: 100%; Bovine: 93%; Zebrafish: 85%
Protein Families:	Druggable Genome, Transcription Factors
Protein Pathways:	Axon guidance, B cell receptor signaling pathway, MAPK signaling pathway, Natural killer cell mediated cytotoxicity, T cell receptor signaling pathway, VEGF signaling pathway, Wnt signaling pathway

Product images:

WB Suggested Anti-NFATC2 Antibody Titration:
0.2-1 ug/ml; ELISA Titer: 1: 312500; Positive
Control: Hela cell lysate



Immunohistochemistry with Thymus tissue at an antibody concentration of 5 ug/ml using anti-NFATC2 antibody