

Product datasheet for **TA343698**

KAT6B Rabbit Polyclonal Antibody

Product data:

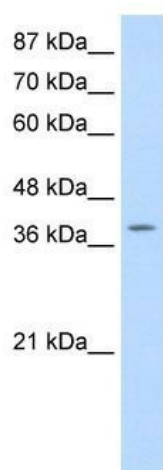
Product Type:	Primary Antibodies
Applications:	WB
Recommended Dilution:	WB
Reactivity:	Human
Host:	Rabbit
Isotype:	IgG
Clonality:	Polyclonal
Immunogen:	The immunogen for anti-MYST4 antibody: synthetic peptide directed towards the N terminal of human MYST4. Synthetic peptide located within the following region: MVKLANPLYTEWILEAIQKIKKQKQRPSEERICHAVSTSHGLDKKTVSEQ
Formulation:	Liquid. Purified antibody supplied in 1x PBS buffer with 0.09% (w/v) sodium azide and 2% sucrose. <i>Note that this product is shipped as lyophilized powder to China customers.</i>
Purification:	Affinity Purified
Conjugation:	Unconjugated
Storage:	Store at -20°C as received.
Stability:	Stable for 12 months from date of receipt.
Predicted Protein Size:	231 kDa
Gene Name:	lysine acetyltransferase 6B
Database Link:	NP_001243397 Entrez Gene 23522 Human Q8WYB5
Background:	MYST4 is a histone acetyltransferase which may be involved in both positive and negative regulation of transcription. It is required for RUNX2-dependent transcriptional activation and May be involved in cerebral cortex development.
Synonyms:	GTPTS; MORF; MOZ2; MYST4; qkf; querkopf; ZC2HC6B
Note:	Immunogen Sequence Homology: Dog: 100%; Pig: 100%; Rat: 100%; Horse: 100%; Human: 100%; Mouse: 100%; Bovine: 100%; Rabbit: 100%; Guinea pig: 100%; Zebrafish: 93%



[View online »](#)

Protein Families: Druggable Genome

Product images:



WB Suggested Anti-MYST4 Antibody Titration: 0.2-1 ug/ml; Positive Control: HepG2 cell lysate; There is BioGPS gene expression data showing that KAT6B is expressed in HepG2