

## Product datasheet for **TA343696**

### LDOC1 Rabbit Polyclonal Antibody

#### Product data:

|                         |  |
|-------------------------|--|
| Product Type:           | Primary Antibodies   |
| Applications:           | IHC, WB  |
| Recommended Dilution:   | WB, IHC  |
| Reactivity:             | Human  |
| Host:                   | Rabbit   |
| Isotype:                | IgG  |
| Clonality:              | Polyclonal   |
| Immunogen:              | The immunogen for anti-LDOC1 antibody: synthetic peptide directed towards the N terminal of human LDOC1. Synthetic peptide located within the following region:<br>MVDELVLLLHALLMRHRALSIENTSQLMEQLRLLVCERASLLRQVRPPSCP |
| Formulation:            | Liquid. Purified antibody supplied in 1x PBS buffer with 0.09% (w/v) sodium azide and 2% sucrose.<br><i>Note that this product is shipped as lyophilized powder to China customers.</i>                                |
| Purification:           | Affinity Purified  |
| Conjugation:            | Unconjugated   |
| Storage:                | Store at -20°C as received.  |
| Stability:              | Stable for 12 months from date of receipt.   |
| Predicted Protein Size: | 17 kDa   |
| Gene Name:              | leucine zipper, down-regulated in cancer 1   |
| Database Link:          | <a href="#">NP_036449</a><br><a href="#">Entrez Gene 23641 Human</a><br><a href="#">O95751</a>   |



[View online »](#)

**Background:**

LDOC1 contains a leucine zipper-like motif and a proline-rich region that shares marked similarity with an SH3-binding domain. The protein localizes to the nucleus and is down-regulated in some cancer cell lines. It is thought to regulate the transcriptional response mediated by the nuclear factor kappa B (NF-kappaB). The gene has been proposed as a tumor suppressor gene whose protein product may have an important role in the development and/or progression of some cancers. The protein encoded by this gene contains a leucine zipper-like motif and a proline-rich region that shares marked similarity with an SH3-binding domain. The protein localizes to the nucleus and is down-regulated in some cancer cell lines. It is thought to regulate the transcriptional response mediated by the nuclear factor kappa B (NF-kappaB). The gene has been proposed as a tumor suppressor gene whose protein product may have an important role in the development and/or progression of some cancers.

**Synonyms:**

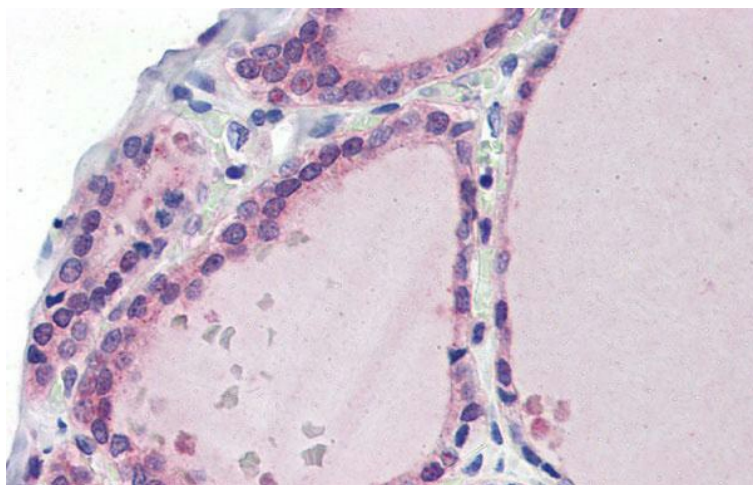
BCUR1; Mar7; Mart7

**Note:**

Immunogen Sequence Homology: Dog: 100%; Pig: 100%; Human: 100%; Bovine: 100%; Rabbit: 100%; Guinea pig: 100%; Horse: 93%; Rat: 79%

**Product images:**

WB Suggested Anti-LDOC1 Antibody Titration:  
0.2-1 ug/ml; ELISA Titer: 1: 12500; Positive  
Control: HepG2 cell lysate



Immunohistochemistry with Human Thyroid lysate tissue at an antibody concentration of 5.0 ug/ml using anti-LDOC1 antibody