

Product datasheet for **TA343694**

HEY2 Rabbit Polyclonal Antibody

Product data:

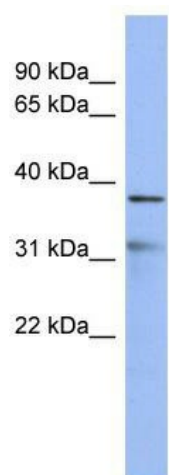
Product Type:	Primary Antibodies
Applications:	WB
Recommended Dilution:	WB
Reactivity:	Human
Host:	Rabbit
Isotype:	IgG
Clonality:	Polyclonal
Immunogen:	The immunogen for anti-HEY2 antibody: synthetic peptide directed towards the middle region of human HEY2. Synthetic peptide located within the following region: PMLPPNAAAAVAAATAISPPLSVSATSSPQQTSSGTNNKPYPWPWGTEVGA
Formulation:	Liquid. Purified antibody supplied in 1x PBS buffer with 0.09% (w/v) sodium azide and 2% sucrose.
Purification:	Affinity Purified
Conjugation:	Unconjugated
Storage:	Store at -20°C as received.
Stability:	Stable for 12 months from date of receipt.
Predicted Protein Size:	36 kDa
Gene Name:	hes related family bHLH transcription factor with YRPW motif 2
Database Link:	NP_036391 Entrez Gene 23493 Human Q9UBP5
Background:	HEY2 is a member of the hairy and enhancer of split-related (HESR) family of basic helix-loop-helix (bHLH)-type transcription factors. HEY2 forms homo- or hetero-dimers that localize to the nucleus and interact with a histone deacetylase complex to repres
Synonyms:	bHLHb32; CHF1; GRIDLOCK; GRL; HERP1; HESR2; HRT2
Note:	Immunogen Sequence Homology: Pig: 100%; Human: 100%; Guinea pig: 100%; Rat: 93%; Horse: 93%; Mouse: 93%; Bovine: 93%; Dog: 90%; Rabbit: 90%; Zebrafish: 86%



[View online »](#)

Protein Families: Druggable Genome, Transcription Factors

Product images:



WB Suggested Anti-HEY2 Antibody Titration: 0.2-1 ug/ml; ELISA Titer: 1: 312500; Positive Control: NCI-H226 cell lysate