

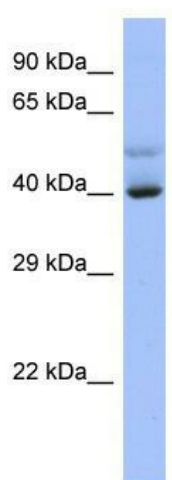
## Product datasheet for **TA343691**

### SCML4 Rabbit Polyclonal Antibody

#### Product data:

Product Type:	Primary Antibodies
Applications:	WB
Recommended Dilution:	WB
Reactivity:	Human
Host:	Rabbit
Isotype:	IgG
Clonality:	Polyclonal
Immunogen:	The immunogen for Anti-SCML4 antibody is: synthetic peptide directed towards the C-terminal region of Human SCML4. Synthetic peptide located within the following region: EDVWVFVKDADPQALGPHVELFRKHEIDGNALLLKSDMVMKYLGLKLGP
Formulation:	Liquid. Purified antibody supplied in 1x PBS buffer with 0.09% (w/v) sodium azide and 2% sucrose.
Purification:	Affinity Purified
Conjugation:	Unconjugated
Storage:	Store at -20°C as received.
Stability:	Stable for 12 months from date of receipt.
Predicted Protein Size:	39 kDa
Gene Name:	sex comb on midleg-like 4 (Drosophila)
Database Link:	<a href="#">NP_001273337</a> <a href="#">Entrez Gene 256380 Human</a> <a href="#">Q8N228</a>
Background:	SCML4 is a putative Polycomb group (PcG) protein. PcG proteins act by forming multiprotein complexes, which are required to maintain the transcriptionally repressive state of homeotic genes throughout development.
Synonyms:	dj47M23.1
Note:	Immunogen Sequence Homology: Dog: 100%; Pig: 100%; Rat: 100%; Horse: 100%; Human: 100%; Rabbit: 100%; Zebrafish: 100%; Mouse: 93%; Bovine: 93%; Guinea pig: 93%


[View online »](#)

**Product images:**

Host: Rabbit; Target Name: SCML4; Sample  
Tissue: NCI-H226 Whole cell lysates; Antibody  
Dilution: 1.0 ug/ml