

## Product datasheet for **TA343686**

### FOXB1 Rabbit Polyclonal Antibody

#### Product data:

Product Type:	Primary Antibodies
Applications:	WB
Recommended Dilution:	WB
Reactivity:	Human
Host:	Rabbit
Isotype:	IgG
Clonality:	Polyclonal
Immunogen:	The immunogen for anti-FOXB1 antibody: synthetic peptide directed towards the N terminal of human FOXB1. Synthetic peptide located within the following region: MPRPGRNTYSDQKPPYSYISLTAMAIQSSPEKMLPLSEIYKFIMDRFPYY
Formulation:	Liquid. Purified antibody supplied in 1x PBS buffer with 0.09% (w/v) sodium azide and 2% sucrose. <i>Note that this product is shipped as lyophilized powder to China customers.</i>
Purification:	Affinity Purified
Conjugation:	Unconjugated
Storage:	Store at -20°C as received.
Stability:	Stable for 12 months from date of receipt.
Predicted Protein Size:	35 kDa
Gene Name:	forkhead box B1
Database Link:	<a href="#">NP_036314</a> <a href="#">Entrez Gene 27023 Human Q99853</a>
Background:	FOXB1 is a winged helix/forkhead transcription factor. FOXB1 is specifically expressed in the developing central nervous system (CNS). Early embryonic FOXB1 expression is restricted to the mammillary body region of the caudal hypothalamus, midbrain, hindbrain and spinal cord. FOXB1 may play a role in postnatal growth, lactation and CNS development.
Synonyms:	FKH5; HFKH-5

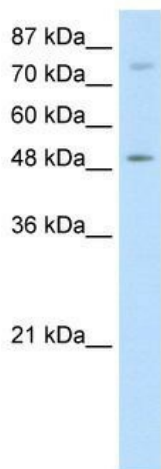


[View online »](#)

**Note:** Immunogen Sequence Homology: Dog: 100%; Pig: 100%; Rat: 100%; Horse: 100%; Human: 100%; Mouse: 100%; Bovine: 100%; Zebrafish: 100%; Guinea pig: 100%; Yeast: 80%; Rabbit: 79%

**Protein Families:** Transcription Factors

**Product images:**



WB Suggested Anti-FOXB1 Antibody Titration: 5.0 ug/ml; ELISA Titer: 1: 62500; Positive Control: HepG2 cell lysate