

## Product datasheet for **TA343681**

### RERE Rabbit Polyclonal Antibody

#### Product data:

Product Type:	Primary Antibodies
Applications:	WB
Recommended Dilution:	WB
Reactivity:	Mouse, Human
Host:	Rabbit
Isotype:	IgG
Clonality:	Polyclonal
Immunogen:	The immunogen for anti-RERE antibody: synthetic peptide directed towards the N terminal of human RERE. Synthetic peptide located within the following region: MTADKDKDKDKEKDRDRDRDREREKRDKARESENSRPRRSCTLEGGAKNY
Formulation:	Liquid. Purified antibody supplied in 1x PBS buffer with 0.09% (w/v) sodium azide and 2% sucrose. <i>Note that this product is shipped as lyophilized powder to China customers.</i>
Purification:	Affinity Purified
Conjugation:	Unconjugated
Storage:	Store at -20°C as received.
Stability:	Stable for 12 months from date of receipt.
Predicted Protein Size:	172 kDa
Gene Name:	arginine-glutamic acid dipeptide repeats
Database Link:	<a href="#">NP_036234</a> <a href="#">Entrez Gene 68703 Mouse</a> <a href="#">Entrez Gene 473 Human</a> <a href="#">Q9P2R6</a>

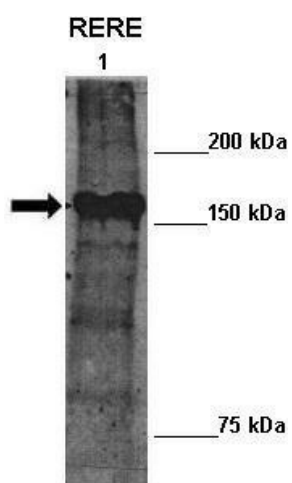


[View online »](#)

- Background:** RERE is a member of the atrophin family of arginine-glutamic acid (RE) dipeptide repeat-containing proteins. RERE co-localizes with a transcription factor in the nucleus, and its overexpression triggers apoptosis. A similar protein in mouse associates with histone deacetylase and is thought to function as a transcriptional co-repressor during embryonic development. This gene encodes a member of the atrophin family of arginine-glutamic acid (RE) dipeptide repeat-containing proteins. The encoded protein co-localizes with a transcription factor in the nucleus, and its overexpression triggers apoptosis. A similar protein in mouse associates with histone deacetylase and is thought to function as a transcriptional co-repressor during embryonic development. Multiple transcript variants encoding different isoforms have been found for this gene.
- Synonyms:** ARG; ARP; ATN1L; DNB1; NEDBEH
- Note:** Immunogen Sequence Homology: Pig: 100%; Rat: 100%; Horse: 100%; Human: 100%; Mouse: 100%; Bovine: 100%; Rabbit: 100%; Guinea pig: 100%; Yeast: 86%; Dog: 79%
- Protein Families:** Transcription Factors
- Product images:**



WB Suggested Anti-RERE Antibody Titration: 0.2-1 ug/ml; ELISA Titer: 1: 62500; Positive Control: 293T cell lysate



Lanes: Lane 1: 10ug mouse ATN2 transfected Drosophila extract; Primary Antibody Dilution: 1: 100; Secondary Antibody: Anti-rabbit-HRP; Secondary Antibody Dilution: 1: 2000; Gene Name: RERE; Submitted by: Manolis Fanto, King's College London