

Product datasheet for **TA343678**

GTF3C5 Rabbit Polyclonal Antibody

Product data:

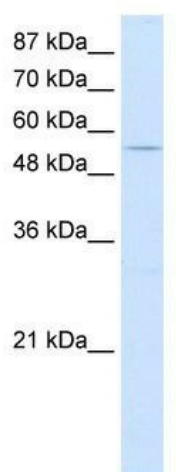
Product Type:	Primary Antibodies
Applications:	IHC, WB
Recommended Dilution:	WB, IHC
Reactivity:	Human
Host:	Rabbit
Isotype:	IgG
Clonality:	Polyclonal
Immunogen:	The immunogen for anti-GTF3C5 antibody: synthetic peptide directed towards the C terminal of human GTF3C5. Synthetic peptide located within the following region: SKRPALFSSSAKADGGKEQLTYESGEDEEEEEEEEEEDFKPSDGSENE
Formulation:	Liquid. Purified antibody supplied in 1x PBS buffer with 0.09% (w/v) sodium azide and 2% sucrose. <i>Note that this product is shipped as lyophilized powder to China customers.</i>
Purification:	Affinity Purified
Conjugation:	Unconjugated
Storage:	Store at -20°C as received.
Stability:	Stable for 12 months from date of receipt.
Predicted Protein Size:	60 kDa
Gene Name:	general transcription factor IIIc subunit 5
Database Link:	NP_036219 Entrez Gene 9328 Human Q9Y5Q8
Background:	GTF3C5 is polypeptide 5 of general transcription factor IIIon Channel. Human transcription factor IIIon Channel (hTFIIIon Channel) is a multisubunit complex that directly recognizes promoter elements and recruits TFIIIB and RNA polymerase III.
Synonyms:	TFIIIc2-63; TFIIIc63; TFIIICepsilon
Note:	Immunogen Sequence Homology: Rat: 100%; Horse: 100%; Human: 100%; Mouse: 100%; Dog: 93%; Bovine: 93%; Rabbit: 93%; Pig: 77%; Guinea pig: 77%



[View online »](#)

Protein Families: Transcription Factors

Product images:



WB Suggested Anti-GTF3C5 Antibody Titration:
0.2-1 ug/ml; Positive Control: HepG2 cell lysate



Human Intestine