

## Product datasheet for **TA343677**

### GTF3C3 Rabbit Polyclonal Antibody

#### Product data:

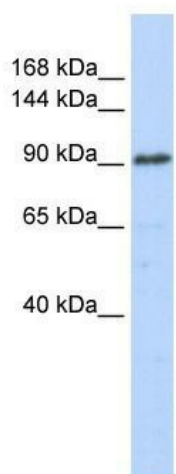
|                         |   |
|-------------------------|---|
| Product Type:           | Primary Antibodies  |
| Applications:           | WB  |
| Recommended Dilution:   | WB  |
| Reactivity:             | Human   |
| Host:                   | Rabbit  |
| Isotype:                | IgG   |
| Clonality:              | Polyclonal  |
| Immunogen:              | The immunogen for anti-GTF3C3 antibody: synthetic peptide directed towards the N terminal of human GTF3C3. Synthetic peptide located within the following region:<br>LQEKGKLSAEENPDDSEVPSSSGINSTKSQDKDVNEGETSDGVRKSVHKV |
| Formulation:            | Liquid. Purified antibody supplied in 1x PBS buffer with 0.09% (w/v) sodium azide and 2% sucrose.<br><i>Note that this product is shipped as lyophilized powder to China customers.</i>                                 |
| Purification:           | Affinity Purified   |
| Conjugation:            | Unconjugated  |
| Storage:                | Store at -20°C as received.   |
| Stability:              | Stable for 12 months from date of receipt.  |
| Predicted Protein Size: | 101 kDa   |
| Gene Name:              | general transcription factor IIIC subunit 3   |
| Database Link:          | <a href="#">NP_036218</a><br><a href="#">Entrez Gene 9330 Human</a><br><a href="#">Q9Y5Q9</a>   |
| Background:             | GTF3C3 is involved in RNA polymerase III-mediated transcription. It is an integral, tightly associated component of the DNA-binding TFIIC2 subcomplex that directly binds tRNA and virus-associated RNA promoters.      |
| Synonyms:               | TFIIC2-102; TFIIC102; TFIICgamma  |
| Note:                   | Immunogen Sequence Homology: Human: 100%; Horse: 93%; Rat: 92%; Rabbit: 86%; Dog: 79%; Pig: 79%; Bovine: 79%; Guinea pig: 77%   |



[View online »](#)

Protein Families: Transcription Factors

### Product images:



WB Suggested Anti-GTF3C3 Antibody Titration:  
0.2-1 ug/ml; ELISA Titer: 1: 312500; Positive  
Control: 721\_B cell lysate. GTF3C3 is supported by  
BioGPS gene expression data to be expressed in  
721\_B