

## Product datasheet for **TA343676**

### ELL2 Rabbit Polyclonal Antibody

#### Product data:

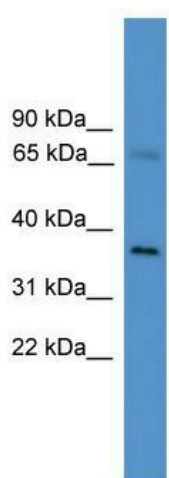
Product Type:	Primary Antibodies
Applications:	WB
Recommended Dilution:	WB
Reactivity:	Human
Host:	Rabbit
Isotype:	IgG
Clonality:	Polyclonal
Immunogen:	The immunogen for anti-ELL2 antibody: synthetic peptide directed towards the C terminal of human ELL2. Synthetic peptide located within the following region: PGSKEYQNVHEEVLQEYQKIKQSSPNYHEEKYRCEYLHNKLAHIKRLIGE
Formulation:	Liquid. Purified antibody supplied in 1x PBS buffer with 0.09% (w/v) sodium azide and 2% sucrose. <i>Note that this product is shipped as lyophilized powder to China customers.</i>
Purification:	Affinity Purified
Conjugation:	Unconjugated
Storage:	Store at -20°C as received.
Stability:	Stable for 12 months from date of receipt.
Predicted Protein Size:	72 kDa
Gene Name:	elongation factor for RNA polymerase II 2
Database Link:	<a href="#">NP_036213</a> <a href="#">Entrez Gene 22936 Human</a> <a href="#">O00472</a>
Background:	ELL2 is the elongation factor that can increase the catalytic rate of RNA polymerase II transcription by suppressing transient pausing by the polymerase at multiple sites along the DNA.
Synonyms:	2; ELL-related RNA polymerase II; elongation factor; RNA polymerase II
Note:	Immunogen Sequence Homology: Dog: 100%; Pig: 100%; Rat: 100%; Horse: 100%; Human: 100%; Mouse: 100%; Bovine: 100%; Rabbit: 100%; Guinea pig: 93%; Zebrafish: 85%



[View online »](#)

Protein Families: Transcription Factors

### Product images:



WB Suggested Anti-ELL2 Antibody Titration: 0.2-1 ug/ml; ELISA Titer: 1: 312500; Positive Control: ACHN cell lysate