

Product datasheet for **TA343673**

BRD3 Rabbit Polyclonal Antibody

Product data:

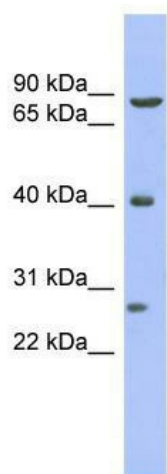
Product Type:	Primary Antibodies
Applications:	WB
Recommended Dilution:	WB
Reactivity:	Human
Host:	Rabbit
Isotype:	IgG
Clonality:	Polyclonal
Immunogen:	The immunogen for anti-BRD3 antibody: synthetic peptide directed towards the middle region of human BRD3. Synthetic peptide located within the following region: ASGKKQAAKSKEELAQEKKKELEKRLQDVSGQLSSSKKPARKEKPGSAPS
Formulation:	Liquid. Purified antibody supplied in 1x PBS buffer with 0.09% (w/v) sodium azide and 2% sucrose. <i>Note that this product is shipped as lyophilized powder to China customers.</i>
Purification:	Affinity Purified
Conjugation:	Unconjugated
Storage:	Store at -20°C as received.
Stability:	Stable for 12 months from date of receipt.
Predicted Protein Size:	79 kDa
Gene Name:	bromodomain containing 3
Database Link:	NP_031397 Entrez Gene 8019 Human Q15059
Background:	BRD3 is a RING3 protein, a serine/threonine kinase. The gene localizes to 9q34, a region which contains several major histocompatibility complex (MHC) genes. The function of the protein is not known.
Synonyms:	ORFX; RING3L
Note:	Immunogen Sequence Homology: Dog: 100%; Pig: 100%; Rat: 100%; Horse: 100%; Human: 100%; Mouse: 100%; Zebrafish: 100%; Guinea pig: 100%; Bovine: 93%; Rabbit: 79%



[View online »](#)

Protein Families: Protein Kinase

Product images:



WB Suggested Anti-BRD3 Antibody Titration: 0.2-1 ug/ml; ELISA Titer: 1: 312500; Positive Control: Human Thymus