

## Product datasheet for **TA343672**

### BRD3 Rabbit Polyclonal Antibody

#### Product data:

Product Type:	Primary Antibodies
Applications:	WB
Recommended Dilution:	WB
Reactivity:	Human
Host:	Rabbit
Isotype:	IgG
Clonality:	Polyclonal
Immunogen:	The immunogen for anti-BRD3 antibody: synthetic peptide directed towards the N terminal of human BRD3. Synthetic peptide located within the following region: MSTATTVAPAGIPATPGPVNPPPEVSNPSKPGRKTNQLQYMQNVVVKTL
Formulation:	Liquid. Purified antibody supplied in 1x PBS buffer with 0.09% (w/v) sodium azide and 2% sucrose. <i>Note that this product is shipped as lyophilized powder to China customers.</i>
Purification:	Protein A purified
Conjugation:	Unconjugated
Storage:	Store at -20°C as received.
Stability:	Stable for 12 months from date of receipt.
Predicted Protein Size:	61 kDa
Gene Name:	bromodomain containing 3
Database Link:	<a href="#">NP_031397</a> <a href="#">Entrez Gene 8019 Human Q15059</a>



[View online »](#)

**Background:**

This gene was identified based on its homology to the gene encoding the RING3 protein, a serine/threonine kinase. The gene localizes to 9q34, a region which contains several major histocompatibility complex (MHC) genes. BRD3 is ubiquitously expressed in human adult and fetal tissues. BRD3 is markedly expressed in undifferentiated ES cells, whereas the expression was reduced upon endothelial differentiation. BRD3 plays a role in regulation of cell proliferation by allowing cells to enter the proliferative phase of the angiogenic process. BRD3 is also involved in bladder cancer.

**Synonyms:**

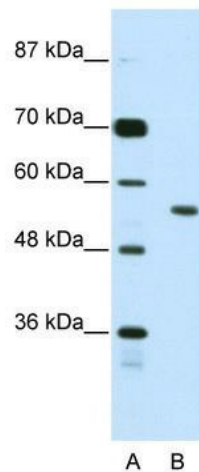
ORFX; RING3L

**Note:**

Immunogen Sequence Homology: Rat: 100%; Human: 100%; Mouse: 100%; Dog: 93%; Pig: 93%; Horse: 93%; Bovine: 93%; Guinea pig: 93%; Rabbit: 86%; Zebrafish: 86%

**Protein Families:**

Protein Kinase

**Product images:**

WB Suggested Anti-BRD3 Antibody Titration: 2.5 ug/ml; ELISA Titer: 1: 312500; Positive Control: Jurkat cell lysate; BRD3 is supported by BioGPS gene expression data to be expressed in Jurkat