

Product datasheet for **TA343671**

ZNF236 Rabbit Polyclonal Antibody

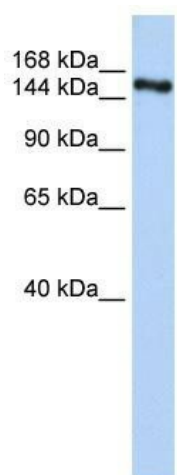
Product data:

| | |
|-------------------------|--|
| Product Type: | Primary Antibodies |
| Applications: | WB |
| Recommended Dilution: | WB |
| Reactivity: | Human |
| Host: | Rabbit |
| Isotype: | IgG |
| Clonality: | Polyclonal |
| Immunogen: | The immunogen for anti-ZNF236 antibody: synthetic peptide directed towards the C terminal of human ZNF236. Synthetic peptide located within the following region: TTPMSPAISTQNLVMSSSGVGGDASVTLTLADTQGMLSGGLDVTNLNIT |
| Formulation: | Liquid. Purified antibody supplied in 1x PBS buffer with 0.09% (w/v) sodium azide and 2% sucrose. |
| Purification: | Affinity Purified |
| Conjugation: | Unconjugated |
| Storage: | Store at -20°C as received. |
| Stability: | Stable for 12 months from date of receipt. |
| Predicted Protein Size: | 204 kDa |
| Gene Name: | zinc finger protein 236 |
| Database Link: | NP_031371 Entrez Gene 7776 Human Q9UL36 |
| Background: | ZNF236 belongs to the krueppel C2H2-type zinc-finger protein family. It contains 30 C2H2-type zinc fingers. ZNF236 may be involved in transcriptional regulation. |
| Synonyms: | ZNF236A; ZNF236B |
| Note: | Immunogen Sequence Homology: Human: 100%; Dog: 79%; Mouse: 79% |



[View online »](#)

Product images:



WB Suggested Anti-ZNF236 Antibody Titration:
0.2-1 ug/ml; ELISA Titer: 1: 312500; Positive
Control: Human brain