

## Product datasheet for **TA343669**

### POU6F2 Rabbit Polyclonal Antibody

#### Product data:

Product Type:	Primary Antibodies
Applications:	WB
Recommended Dilution:	WB
Reactivity:	Human
Host:	Rabbit
Isotype:	IgG
Clonality:	Polyclonal
Immunogen:	The immunogen for anti-POU6F2 antibody: synthetic peptide directed towards the C terminal of human POU6F2. Synthetic peptide located within the following region: PSKKRRRTSFTPQALEILNAHFENKTHPSGQEMTEIAEKLNYDREVVRV
Formulation:	Liquid. Purified antibody supplied in 1x PBS buffer with 0.09% (w/v) sodium azide and 2% sucrose. <i>Note that this product is shipped as lyophilized powder to China customers.</i>
Purification:	Affinity Purified
Conjugation:	Unconjugated
Storage:	Store at -20°C as received.
Stability:	Stable for 12 months from date of receipt.
Predicted Protein Size:	73 kDa
Gene Name:	POU class 6 homeobox 2
Database Link:	<a href="#">NP_009183</a> <a href="#">Entrez Gene 11281 Human P78424</a>
Background:	POU6F2 is a member of a gene family characterized by the presence of a bipartite DNA-binding domain, consisting of a POU-specific domain and a POU heterodomain, separated by a variable polylinker. POU domain family members are transcriptional regulators, many of which show highly restricted patterns of expression and are known to control cell type-specific differentiation pathways.
Synonyms:	RPF-1; WT5; WTSL

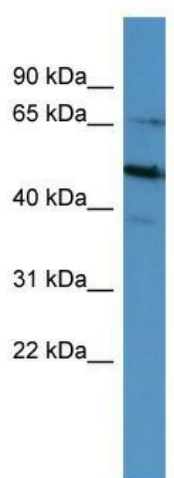


[View online »](#)

**Note:** Immunogen Sequence Homology: Dog: 100%; Pig: 100%; Rat: 100%; Horse: 100%; Human: 100%; Mouse: 100%; Zebrafish: 100%; Guinea pig: 100%; Rabbit: 93%; Bovine: 79%

**Protein Families:** Transcription Factors

**Product images:**



WB Suggested Anti-POU6F2 Antibody Titration:  
0.2-1 ug/ml; ELISA Titer: 1: 62500; Positive  
Control: HepG2 cell lysate