

Product datasheet for **TA343668**

POU6F2 Rabbit Polyclonal Antibody

Product data:

Product Type:	Primary Antibodies
Applications:	WB
Recommended Dilution:	WB
Reactivity:	Human
Host:	Rabbit
Isotype:	IgG
Clonality:	Polyclonal
Immunogen:	The immunogen for anti-POU6F2 antibody: synthetic peptide directed towards the N terminal of human POU6F2. Synthetic peptide located within the following region: AATSDSELNEPLLAPVESNDS EDTPSKLFGARGNPALSDPGTDPDQHQSQ
Formulation:	Liquid. Purified antibody supplied in 1x PBS buffer with 0.09% (w/v) sodium azide and 2% sucrose. <i>Note that this product is shipped as lyophilized powder to China customers.</i>
Purification:	Affinity Purified
Conjugation:	Unconjugated
Storage:	Store at -20°C as received.
Stability:	Stable for 12 months from date of receipt.
Predicted Protein Size:	73 kDa
Gene Name:	POU class 6 homeobox 2
Database Link:	NP_009183 Entrez Gene 11281 Human P78424



[View online »](#)

Background:

POU6F2 is a member of a gene family characterized by the presence of a bipartite DNA-binding domain, consisting of a POU-specific domain and a POU heterodomain, separated by a variable polylinker. POU domain family members are transcriptional regulators, many of which show highly restricted patterns of expression and are known to control cell type-specific differentiation pathways. POU6F2 is a member of a gene family characterized by the presence of a bipartite DNA-binding domain, consisting of a POU-specific domain and a POU heterodomain, separated by a variable polylinker. POU domain family members are transcriptional regulators, many of which show highly restricted patterns of expression and are known to control cell type-specific differentiation pathways (see review by Phillips and Luisi, 2000 [PubMed 11183772]). [supplied by OMIM]. PRIMARYREFSEQ_SPAN PRIMARY_IDENTIFIER PRIMARY_SPAN COMP 1-60 AC011292.3 84260-84319 61-553 U91935.1 102-594 554-927 AC005483.1 150160-150533 c 928-1068 AC005483.1 83435-83575 c 1069-1275 AC005483.1 56892-57098 c 1276-1613 U91935.1 1320-1657 1614-2223 AC005483.1 25384-25993 c

Synonyms:

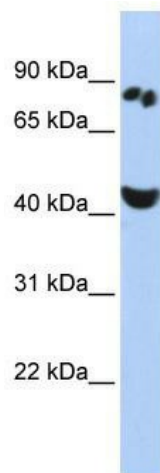
RPF-1; WT5; WTSL

Note:

Immunogen Sequence Homology: Dog: 100%; Rat: 100%; Human: 100%; Bovine: 100%; Pig: 93%; Mouse: 93%; Rabbit: 93%; Guinea pig: 93%

Protein Families:

Transcription Factors

Product images:

WB Suggested Anti-POU6F2 Antibody Titration:
0.2-1 ug/ml; ELISA Titer: 1: 312500; Positive
Control: HepG2 cell lysate