

Product datasheet for **TA343667**

KLF12 Rabbit Polyclonal Antibody

Product data:

Product Type:	Primary Antibodies
Applications:	WB
Recommended Dilution:	WB
Reactivity:	Human
Host:	Rabbit
Isotype:	IgG
Clonality:	Polyclonal
Immunogen:	The immunogen for anti-KLF12 antibody: synthetic peptide directed towards the N terminal of human KLF12. Synthetic peptide located within the following region: NIHMKRKTIKNINTFENRMLMLDGMPAVRVKTELLESEQGSPNVHNYPD
Formulation:	Liquid. Purified antibody supplied in 1x PBS buffer with 0.09% (w/v) sodium azide and 2% sucrose. <i>Note that this product is shipped as lyophilized powder to China customers.</i>
Purification:	Affinity Purified
Conjugation:	Unconjugated
Storage:	Store at -20°C as received.
Stability:	Stable for 12 months from date of receipt.
Predicted Protein Size:	44 kDa
Gene Name:	Kruppel-like factor 12
Database Link:	NP_009180 Entrez Gene 11278 Human Q9Y4X4



[View online »](#)

Background:

Activator protein-2 alpha (AP-2 alpha) is a developmentally-regulated transcription factor and important regulator of gene expression during vertebrate development and carcinogenesis. KLF12 is a member of the Kruppel-like zinc finger protein family and can repress expression of the AP-2 alpha gene by binding to a specific site in the AP-2 alpha gene promoter. Repression by the encoded protein requires binding with a corepressor, CtBP1. Activator protein-2 alpha (AP-2 alpha) is a developmentally-regulated transcription factor and important regulator of gene expression during vertebrate development and carcinogenesis. The protein encoded by this gene is a member of the Kruppel-like zinc finger protein family and can repress expression of the AP-2 alpha gene by binding to a specific site in the AP-2 alpha gene promoter. Repression by the encoded protein requires binding with a corepressor, CtBP1. Two transcript variants encoding different isoforms have been found for this gene.

Synonyms:

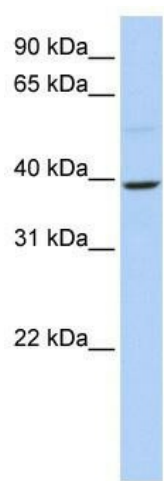
AP-2rep; AP2REP; HSPC122

Note:

Immunogen Sequence Homology: Dog: 100%; Human: 100%; Pig: 93%; Guinea pig: 93%; Rabbit: 86%

Protein Families:

Transcription Factors

Product images:

WB Suggested Anti-KLF12 Antibody Titration: 0.2-1 ug/ml; ELISA Titer: 1: 1562500; Positive Control: 721_B cell lysate; KLF12 is strongly supported by BioGPS gene expression data to be expressed in Human 721_B cells