

Product datasheet for **TA343665**

SUPT16H Rabbit Polyclonal Antibody

Product data:

Product Type:	Primary Antibodies
Applications:	WB
Recommended Dilution:	WB
Reactivity:	Human
Host:	Rabbit
Isotype:	IgG
Clonality:	Polyclonal
Immunogen:	The immunogen for anti-SUPT16H antibody: synthetic peptide directed towards the middle region of human SUPT16H. Synthetic peptide located within the following region: EESDYSKESLGSEESGKDWDELEEEARKADRESRYEEEEEQSRMSRKR
Formulation:	Liquid. Purified antibody supplied in 1x PBS buffer with 0.09% (w/v) sodium azide and 2% sucrose. <i>Note that this product is shipped as lyophilized powder to China customers.</i>
Purification:	Affinity Purified
Conjugation:	Unconjugated
Storage:	Store at -20°C as received.
Stability:	Stable for 12 months from date of receipt.
Predicted Protein Size:	120 kDa
Gene Name:	SPT16 homolog, facilitates chromatin remodeling subunit
Database Link:	NP_009123 Entrez Gene 11198 Human Q9Y5B9



[View online »](#)

Background:

Transcription of protein-coding genes can be reconstituted on naked DNA with only the general transcription factors and RNA polymerase II. However, this minimal system cannot transcribe DNA packaged into chromatin, indicating that accessory factors may facilitate access to DNA. One such factor, FACT (facilitates chromatin transcription), interacts specifically with histones H2A/H2B to effect nucleosome disassembly and transcription elongation. FACT is composed of an 80 kDa subunit and a 140 kDa subunit, the latter of which is SUPT16H. Transcription of protein-coding genes can be reconstituted on naked DNA with only the general transcription factors and RNA polymerase II. However, this minimal system cannot transcribe DNA packaged into chromatin, indicating that accessory factors may facilitate access to DNA. One such factor, FACT (facilitates chromatin transcription), interacts specifically with histones H2A/H2B to effect nucleosome disassembly and transcription elongation. FACT is composed of an 80 kDa subunit and a 140 kDa subunit, the latter of which is the protein encoded by this gene. Sequence Note: The sequence AF152961.1 is a chimeric mRNA clone. Only the SUPT16H region was propagated into this RefSeq record. Publication Note: This RefSeq record includes a subset of the publications that are available for this gene. Please see the Entrez Gene record to access additional publications.

Synonyms:

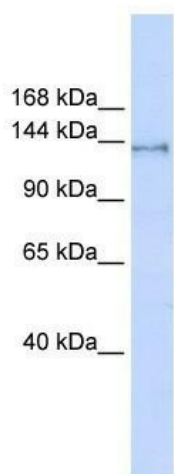
CDC68; FACTP140; SPT16

Note:

Immunogen Sequence Homology: Dog: 100%; Pig: 100%; Rat: 100%; Horse: 100%; Human: 100%; Mouse: 100%; Bovine: 100%; Rabbit: 100%; Goat: 93%; Zebrafish: 93%

Protein Families:

Druggable Genome, Transcription Factors

Product images:

WB Suggested Anti-SUPT16H Antibody Titration: 0.2-1 ug/ml; ELISA Titer: 1: 1562500; Positive Control: 293T cell lysate; SUPT16H is supported by BioGPS gene expression data to be expressed in HEK293T