

## Product datasheet for **TA343662**

### ZNF185 Rabbit Polyclonal Antibody

#### Product data:

Product Type:	Primary Antibodies
Applications:	WB
Recommended Dilution:	WB
Reactivity:	Human
Host:	Rabbit
Isotype:	IgG
Clonality:	Polyclonal
Immunogen:	The immunogen for anti-ZNF185 antibody: synthetic peptide directed towards the N terminal of human ZNF185. Synthetic peptide located within the following region: LAPYNIRRSSTSGDTEEEEEVVPFSSDEQKRRSEAASGVLRRRTAPREH
Formulation:	Liquid. Purified antibody supplied in 1x PBS buffer with 0.09% (w/v) sodium azide and 2% sucrose. <i>Note that this product is shipped as lyophilized powder to China customers.</i>
Purification:	Affinity Purified
Conjugation:	Unconjugated
Storage:	Store at -20°C as received.
Stability:	Stable for 12 months from date of receipt.
Predicted Protein Size:	73 kDa
Gene Name:	zinc finger protein 185 (LIM domain)
Database Link:	<a href="#">NP_009081</a> <a href="#">Entrez Gene 7739 Human</a> <a href="#">O15231</a>
Background:	ZNF185 contains 1 LIM zinc-binding domain. The function of ZNF185 remains unknown. ZNF185 encodes a LIM-domain zinc finger protein. These proteins are thought to be involved in protein-protein interactions. [supplied by OMIM]. PRIMARYREFSEQ_SPAN PRIMARY_IDENTIFIER PRIMARY_SPAN COMP 1-1276 AY997296.1 1-1276 1277-4307 AK056517.1 347-3377 4308-4312 BQ923456.1 628-632
Synonyms:	SCELL

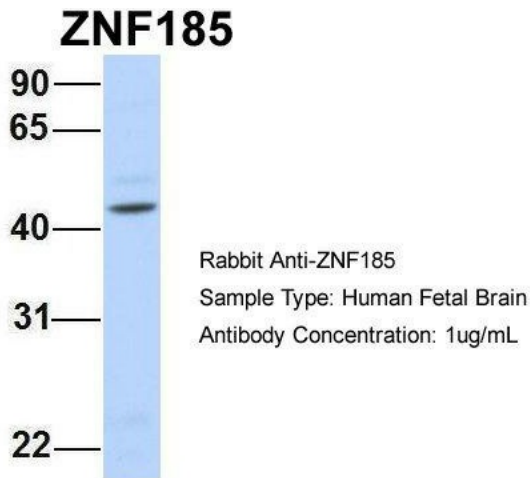


[View online »](#)

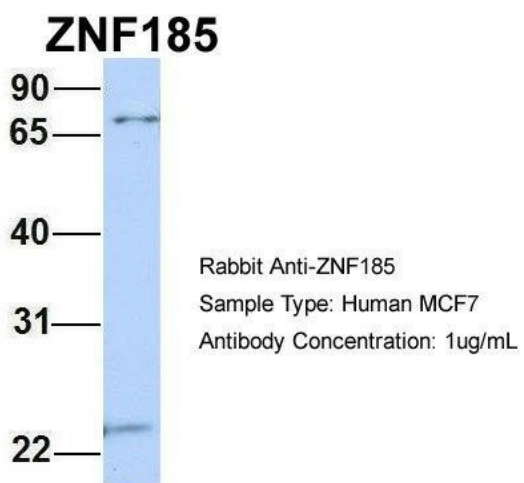
Note: Immunogen Sequence Homology: Human: 100%; Mouse: 86%; Horse: 79%

**Product images:**

WB Suggested Anti-ZNF185 Antibody Titration:  
0.2-1 ug/ml; ELISA Titer: 1: 12500; Positive  
Control: Hela cell lysate



Host: Rabbit; Target Name: ZNF185; Sample  
Tissue: Human Fetal Brain; Antibody Dilution: 1.0  
ug/ml



Host: Rabbit; Target Name: ZNF185; Sample Tissue: MCF7; Antibody Dilution: 1.0 ug/ml; ZNF185 is supported by BioGPS gene expression data to be expressed in MCF7