

Product datasheet for **TA343659**

LXR beta (NR1H2) Rabbit Polyclonal Antibody

Product data:

Product Type:	Primary Antibodies
Applications:	WB
Recommended Dilution:	WB
Reactivity:	Human
Host:	Rabbit
Isotype:	IgG
Clonality:	Polyclonal
Immunogen:	The immunogen for anti-NR1H2 antibody: synthetic peptide directed towards the N terminal of human NR1H2. Synthetic peptide located within the following region: GNGPPQPGAPSSSPTVKEEGPEPWGGPDPDVPDGTDEASSACSTDWIPD
Formulation:	Liquid. Purified antibody supplied in 1x PBS buffer with 0.09% (w/v) sodium azide and 2% sucrose. <i>Note that this product is shipped as lyophilized powder to China customers.</i>
Purification:	Protein A purified
Conjugation:	Unconjugated
Storage:	Store at -20°C as received.
Stability:	Stable for 12 months from date of receipt.
Predicted Protein Size:	51 kDa
Gene Name:	nuclear receptor subfamily 1 group H member 2
Database Link:	NP_009052 Entrez Gene 7376 Human P55055



[View online »](#)

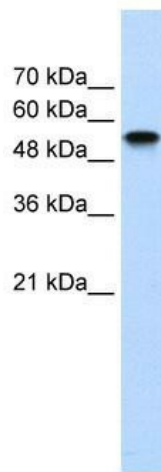
Background: The LX receptors (LXRs) were originally identified as orphan members of the nuclear receptor superfamily because their ligands were unknown. Like other receptors in the family, LXRs heterodimerize with retinoid X receptor and bind to specific response elements (LXREs) characterized by direct repeats separated by 4 nucleotides. Two genes, alpha (LXRA) and beta, are known to encode LXR proteins. The LX receptors (LXRs) were originally identified as orphan members of the nuclear receptor superfamily because their ligands were unknown. Like other receptors in the family, LXRs heterodimerize with retinoid X receptor (see MIM 180245) and bind to specific response elements (LXREs) characterized by direct repeats separated by 4 nucleotides. Two genes, alpha (LXRA, MIM 602423) and beta, are known to encode LXR proteins (Song et al., 1995). [supplied by OMIM]

Synonyms: LXR-b; LXRβ; NER; NER-I; RIP15; UNR

Note: Immunogen Sequence Homology: Human: 100%; Dog: 90%; Pig: 86%; Rat: 86%; Guinea pig: 86%; Horse: 79%

Protein Families: Druggable Genome, Nuclear Hormone Receptor, Transcription Factors

Product images:



WB Suggested Anti-NR1H2 Antibody Titration:
1.25 ug/ml; ELISA Titer: 1: 62500; Positive Control:
Transfected 293T