

Product datasheet for **TA343655**

Coronin 1a (CORO1A) Rabbit Polyclonal Antibody

Product data:

Product Type:	Primary Antibodies
Applications:	WB
Recommended Dilution:	WB
Reactivity:	Human
Host:	Rabbit
Isotype:	IgG
Clonality:	Polyclonal
Immunogen:	The immunogen for anti-CORO1A antibody: synthetic peptide directed towards the N terminal of human CORO1A. Synthetic peptide located within the following region: MSRQVVRSSKFRHVFVGQPAKADQCYEDVRVSQTTWDSGFCAVNPKEVALI
Formulation:	Liquid. Purified antibody supplied in 1x PBS buffer with 0.09% (w/v) sodium azide and 2% sucrose. <i>Note that this product is shipped as lyophilized powder to China customers.</i>
Purification:	Protein A purified
Conjugation:	Unconjugated
Storage:	Store at -20°C as received.
Stability:	Stable for 12 months from date of receipt.
Predicted Protein Size:	51 kDa
Gene Name:	coronin 1A
Database Link:	NP_009005 Entrez Gene 11151 Human P31146
Background:	CORO1A is a novel actin-binding protein with a WD repeat and a leucine zipper motif. CORO1A forms homodimers, that the association is mediated by the leucine zipper structure in the C-terminal region, and that it plays a role in the cross-linking of F-actin in the cell. The leukocyte plasma membrane associates with the actin cytoskeleton through CORO1A. Downregulation of CORO1A gene transcription restricts entry/survival of mycobacteria within macrophages

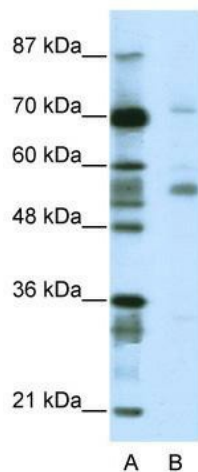


[View online »](#)

Synonyms: CLABP; CLIPINA; HCORO1; IMD8; p57; TACO

Note: Immunogen Sequence Homology: Dog: 100%; Pig: 100%; Rat: 100%; Horse: 100%; Human: 100%; Mouse: 100%; Bovine: 100%; Rabbit: 100%; Guinea pig: 100%; Zebrafish: 86%

Product images:



WB Suggested Anti-CORO1A Antibody Titration: 2.5 ug/ml; ELISA Titer: 1: 312500; Positive Control: Jurkat cell lysate; CORO1A is supported by BioGPS gene expression data to be expressed in Jurkat