

## Product datasheet for **TA343650**

### ZBTB25 Rabbit Polyclonal Antibody

#### Product data:

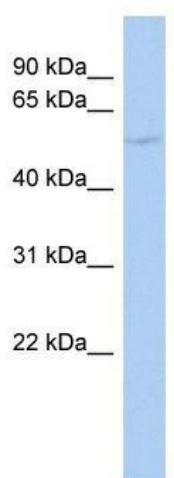
Product Type:	Primary Antibodies
Applications:	WB
Recommended Dilution:	WB
Reactivity:	Human
Host:	Rabbit
Isotype:	IgG
Clonality:	Polyclonal
Immunogen:	The immunogen for anti-ZBTB25 antibody: synthetic peptide directed towards the middle region of human ZBTB25. Synthetic peptide located within the following region: GNALAQRFQPYCDSWSDVSLKSSRLSQEHLDLPCALESELTQENVDTILV
Formulation:	Liquid. Purified antibody supplied in 1x PBS buffer with 0.09% (w/v) sodium azide and 2% sucrose. <i>Note that this product is shipped as lyophilized powder to China customers.</i>
Purification:	Affinity Purified
Conjugation:	Unconjugated
Storage:	Store at -20°C as received.
Stability:	Stable for 12 months from date of receipt.
Predicted Protein Size:	49 kDa
Gene Name:	zinc finger and BTB domain containing 25
Database Link:	<a href="#">NP_008908</a> <a href="#">Entrez Gene 7597 Human</a> <a href="#">P24278</a>
Background:	ZBTB25 contains 1 BTB (POZ) domain and 2 C2H2-type zinc fingers and belongs to the krueppel C2H2-type zinc-finger protein family. ZBTB25 may be involved in transcriptional regulation.
Synonyms:	C14orf51; KUP; ZNF46
Note:	Immunogen Sequence Homology: Human: 100%; Rat: 92%; Horse: 92%; Mouse: 92%; Dog: 79%; Bovine: 79%



[View online »](#)

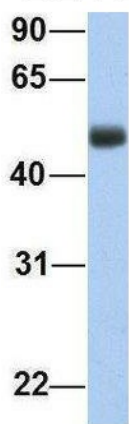
Protein Families: Transcription Factors

**Product images:**



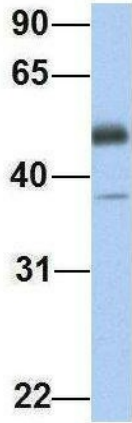
WB Suggested Anti-ZBTB25 Antibody Titration:  
0.2-1 ug/ml; ELISA Titer: 1: 62500; Positive  
Control: OVCAR-3 cell lysate

**ZBTB25**



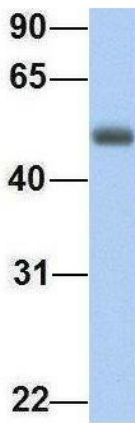
Rabbit Anti-ZBTB25  
Sample Type: Human Fetal Lung  
Antibody Concentration: 1ug/mL

Host: Rabbit; Target Name: ZBTB25; Sample  
Tissue: Human Fetal Lung; Antibody Dilution: 1.0  
ug/ml

**ZBTB25**

Rabbit Anti-ZBTB25  
Sample Type: Human Fetal Heart  
Antibody Concentration: 1ug/mL

Host: Rabbit; Target Name: ZBTB25; Sample  
Tissue: Human Fetal Heart; Antibody Dilution: 1.0  
ug/ml

**ZBTB25**

Rabbit Anti-ZBTB25  
Sample Type: Human Adult  
Placenta  
Antibody Concentration: 1ug/mL

Host: Rabbit; Target Name: ZBTB25; Sample  
Tissue: Human Adult Placenta; Antibody Dilution:  
1.0 ug/ml