

Product datasheet for **TA343648**

ZNF16 Rabbit Polyclonal Antibody

Product data:

Product Type:	Primary Antibodies
Applications:	WB
Recommended Dilution:	WB
Reactivity:	Human
Host:	Rabbit
Isotype:	IgG
Clonality:	Polyclonal
Immunogen:	The immunogen for anti-ZNF16 antibody: synthetic peptide directed towards the C terminal of human ZNF16. Synthetic peptide located within the following region: GKAFSQRSVLIQHQRHTGVKPYDCAACGKAFSQRSKLIKHQLIHTRE
Formulation:	Liquid. Purified antibody supplied in 1x PBS buffer with 0.09% (w/v) sodium azide and 2% sucrose. <i>Note that this product is shipped as lyophilized powder to China customers.</i>
Purification:	Affinity Purified
Conjugation:	Unconjugated
Storage:	Store at -20°C as received.
Stability:	Stable for 12 months from date of receipt.
Predicted Protein Size:	76 kDa
Gene Name:	zinc finger protein 16
Database Link:	NP_008889 Entrez Gene 7564 Human P17020
Background:	ZNF16 contains a C2H2 type of zinc finger, and thus may function as a transcription factor. The protein encoded by this gene contains a C2H2 type of zinc finger, and thus may function as a transcription factor. This gene is located in a region close to ZNF7/KOX4, a gene also encoding a zinc finger protein, on chromosome 8. Two alternatively spliced variants, encoding the same protein, have been identified.
Synonyms:	HZF1; KOX9

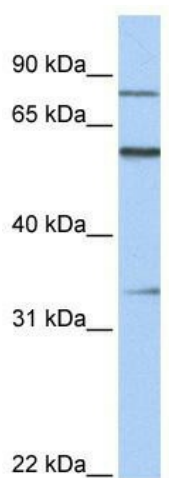


[View online »](#)

Note: Immunogen Sequence Homology: Pig: 100%; Human: 100%; Rabbit: 100%; Dog: 93%; Horse: 93%; Bovine: 93%; Rat: 86%; Mouse: 79%; Guinea pig: 79%

Protein Families: Transcription Factors

Product images:



WB Suggested Anti-ZNF16 Antibody Titration: 0.2-1 ug/ml; ELISA Titer: 1: 62500; Positive Control: Human heart