

Product datasheet for **TA343640**

TIS11D (ZFP36L2) Rabbit Polyclonal Antibody

Product data:

Product Type:	Primary Antibodies
Applications:	WB
Recommended Dilution:	WB
Reactivity:	Human
Host:	Rabbit
Isotype:	IgG
Clonality:	Polyclonal
Immunogen:	The immunogen for anti-ZFP36L2 antibody: synthetic peptide directed towards the N terminal of human ZFP36L2. Synthetic peptide located within the following region: MSTLLSAFYDVDFLCKTEKSLANLNLNMLDKKAVGTPVAAAPSSGFAP
Formulation:	Liquid. Purified antibody supplied in 1x PBS buffer with 0.09% (w/v) sodium azide and 2% sucrose. <i>Note that this product is shipped as lyophilized powder to China customers.</i>
Purification:	Affinity Purified
Conjugation:	Unconjugated
Storage:	Store at -20°C as received.
Stability:	Stable for 12 months from date of receipt.
Predicted Protein Size:	51 kDa
Gene Name:	ZFP36 ring finger protein-like 2
Database Link:	NP_008818 Entrez Gene 678 Human P47974



[View online »](#)

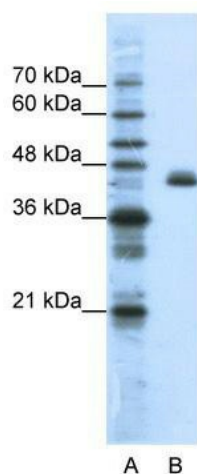
Background: ZFP36L2 is a member of the TIS11 family of early response genes. Family members are induced by various agonists such as the phorbol ester TPA and the polypeptide mitogen EGF. The encoded protein contains a distinguishing putative zinc finger domain with a repeating cys-his motif. This putative nuclear transcription factor most likely functions in regulating the response to growth factors. This gene is a member of the TIS11 family of early response genes. Family members are induced by various agonists such as the phorbol ester TPA and the polypeptide mitogen EGF. The encoded protein contains a distinguishing putative zinc finger domain with a repeating cys-his motif. This putative nuclear transcription factor most likely functions in regulating the response to growth factors.

Synonyms: BRF2; ERF-2; ERF2; RNF162C; TIS11D

Note: Immunogen Sequence Homology: Dog: 100%; Pig: 100%; Rat: 100%; Horse: 100%; Human: 100%; Mouse: 100%; Bovine: 100%; Rabbit: 100%

Protein Families: Transcription Factors

Product images:



WB Suggested Anti-ZFP36L2 Antibody Titration: 1.25 ug/ml; Positive Control: HepG2 cell lysate; ZFP36L2 is strongly supported by BioGPS gene expression data to be expressed in Human HepG2 cells