

## Product datasheet for **TA343639**

### ATF7 Rabbit Polyclonal Antibody

#### Product data:

Product Type:	Primary Antibodies
Applications:	WB
Recommended Dilution:	WB
Reactivity:	Human
Host:	Rabbit
Isotype:	IgG
Clonality:	Polyclonal
Immunogen:	The immunogen for anti-ATF7 antibody: synthetic peptide directed towards the C terminal of human ATF7. Synthetic peptide located within the following region: TAPSNGLSVRSAAEAVATSVLTQMASQRTELSMPIQSHVIMTPQSQSAGR
Formulation:	Liquid. Purified antibody supplied in 1x PBS buffer with 0.09% (w/v) sodium azide and 2% sucrose. <i>Note that this product is shipped as lyophilized powder to China customers.</i>
Purification:	Protein A purified
Conjugation:	Unconjugated
Storage:	Store at -20°C as received.
Stability:	Stable for 12 months from date of receipt.
Predicted Protein Size:	52 kDa
Gene Name:	activating transcription factor 7
Database Link:	<a href="#">NP_006847</a> <a href="#">Entrez Gene 11016 Human P17544</a>
Background:	The human ATF7(ATFa) proteins belong to the ATF/CREB family of transcription factors. They mediate the transcriptional activation by the largest E1a protein and can heterodimerize with members of the Jun/Fos family. ATFa proteins have also been found tightly associated with JNK2, a stress-activated kinase. Four variants of ATFa (ATFa0, ATFa1, ATFa2, and ATFa3) have been characterized.
Synonyms:	ATFA

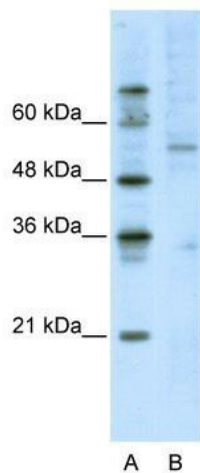


[View online »](#)

**Note:** Immunogen Sequence Homology: Dog: 100%; Pig: 100%; Rat: 100%; Horse: 100%; Human: 100%; Mouse: 100%; Bovine: 93%; Guinea pig: 86%

**Protein Families:** Transcription Factors

**Product images:**



WB Suggested Anti-ATF7 Antibody Titration: 2.5 ug/ml; ELISA Titer: 1: 62500; Positive Control: Jurkat cell lysate