

Product datasheet for **TA343637**

LZTR1 Rabbit Polyclonal Antibody

Product data:

Product Type:	Primary Antibodies
Applications:	WB
Recommended Dilution:	WB
Reactivity:	Human
Host:	Rabbit
Isotype:	IgG
Clonality:	Polyclonal
Immunogen:	The immunogen for anti-LZTR1 antibody: synthetic peptide directed towards the C terminal of human LZTR1. Synthetic peptide located within the following region: GFYNNRLQAYCKQNLEMNVTQNVLQILEAADKTQALDMKRHCLHIIVHQ
Formulation:	Liquid. Purified antibody supplied in 1x PBS buffer with 0.09% (w/v) sodium azide and 2% sucrose. <i>Note that this product is shipped as lyophilized powder to China customers.</i>
Purification:	Protein A purified
Conjugation:	Unconjugated
Storage:	Store at -20°C as received.
Stability:	Stable for 12 months from date of receipt.
Predicted Protein Size:	95 kDa
Gene Name:	leucine-zipper-like transcription regulator 1
Database Link:	NP_006758 Entrez Gene 8216 Human Q8N653



[View online »](#)

Background:

Leucine-zipper-like transcriptional regulator 1(LZTR1) is believed to be a DNA-binding protein and transcriptional regulator based on its predicted structural characteristics. The transcript is present in several essential fetal organs and is hemizyously deleted in some DiGeorge syndrome patients. LZTR1 is thought to play a critical role in embryogenesis. Leucine-zipper-like transcriptional regulator 1 is believed to be a DNA-binding protein and transcriptional regulator based on its predicted structural characteristics. The transcript is present in several essential fetal organs and is hemizyously deleted in some DiGeorge syndrome patients. It is thought to play a critical role in embryogenesis.

Synonyms:

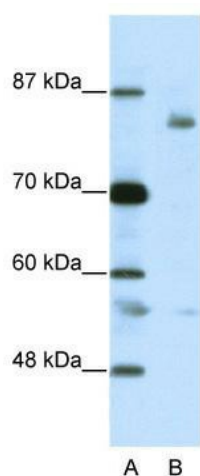
BTBD29; LZTR-1; NS10; SWNTS2

Note:

Immunogen Sequence Homology: Dog: 100%; Pig: 100%; Rat: 100%; Horse: 100%; Human: 100%; Mouse: 100%; Bovine: 100%; Rabbit: 100%; Guinea pig: 100%; Zebrafish: 93%

Protein Families:

Transcription Factors

Product images:

WB Suggested Anti-LZTR1 Antibody Titration: 2.5 ug/ml; ELISA Titer: 1: 312500; Positive Control: Jurkat cell lysate