

Product datasheet for **TA343632**

PLAGL1 Rabbit Polyclonal Antibody

Product data:

Product Type:	Primary Antibodies
Applications:	WB
Recommended Dilution:	WB
Reactivity:	Human
Host:	Rabbit
Isotype:	IgG
Clonality:	Polyclonal
Immunogen:	The immunogen for anti-PLAGL1 antibody: synthetic peptide directed towards the N terminal of human PLAGL1. Synthetic peptide located within the following region: MATHSPQKSHQCAHCEKTFNRKDHLKNHLQTHDPNKMAFGCEECGKKYNT
Formulation:	Liquid. Purified antibody supplied in 1x PBS buffer with 0.09% (w/v) sodium azide and 2% sucrose. <i>Note that this product is shipped as lyophilized powder to China customers.</i>
Purification:	Protein A purified
Conjugation:	Unconjugated
Storage:	Store at -20°C as received.
Stability:	Stable for 12 months from date of receipt.
Predicted Protein Size:	45 kDa
Gene Name:	PLAG1 like zinc finger 1
Database Link:	NP_002647 Entrez Gene 5325 Human Q9UM63
Background:	PLAGL1 is a C2H2 zinc finger protein with transactivation and DNA-binding activity. This gene has been shown to exhibit antiproliferative activities and is a tumor suppressor gene candidate. This gene encodes a C2H2 zinc finger protein with transactivation and DNA-binding activity. This gene has been shown to exhibit antiproliferative activities and is a tumor suppressor gene candidate. Two transcript variants encoding different isoforms have been found for this gene.



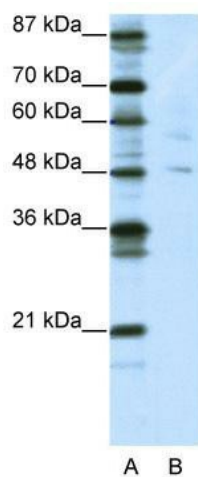
[View online »](#)

Synonyms: LOT1; ZAC; ZAC1

Note: Immunogen Sequence Homology: Dog: 100%; Pig: 100%; Rat: 100%; Horse: 100%; Human: 100%; Bovine: 100%; Rabbit: 100%; Guinea pig: 100%; Mouse: 93%; Zebrafish: 92%

Protein Families: Transcription Factors

Product images:



WB Suggested Anti-PLAGL1 Antibody Titration: 5.0 ug/ml; ELISA Titer: 1: 1562500; Positive Control: 293T cell lysate. PLAGL1 is strongly supported by BioGPS gene expression data to be expressed in Human HEK293T cells