

Product datasheet for **TA343629**

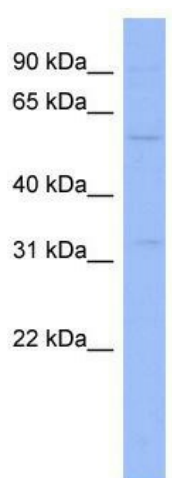
ZNF266 Rabbit Polyclonal Antibody

Product data:

Product Type:	Primary Antibodies
Applications:	WB
Recommended Dilution:	WB
Reactivity:	Human
Host:	Rabbit
Isotype:	IgG
Clonality:	Polyclonal
Immunogen:	The immunogen for anti-ZNF266 antibody: synthetic peptide directed towards the middle region of human ZNF266. Synthetic peptide located within the following region: KFSYSNSFQLHERHTHTGEKPYECKGKAFSSSSFRNHERRHADERLS
Formulation:	Liquid. Purified antibody supplied in 1x PBS buffer with 0.09% (w/v) sodium azide and 2% sucrose. <i>Note that this product is shipped as lyophilized powder to China customers.</i>
Purification:	Affinity Purified
Conjugation:	Unconjugated
Storage:	Store at -20°C as received.
Stability:	Stable for 12 months from date of receipt.
Predicted Protein Size:	62 kDa
Gene Name:	zinc finger protein 266
Database Link:	NP_006622 Entrez Gene 10781 Human Q14584
Background:	Located on chromosome 19, ZNF266 is part of the Kruppel-related zinc finger gene family.
Synonyms:	HZF1
Note:	Immunogen Sequence Homology: Human: 100%; Mouse: 79%; Pig: 77%; Rat: 77%; Rabbit: 77%; Guinea pig: 77%
Protein Families:	Transcription Factors



[View online »](#)

Product images:

WB Suggested Anti-ZNF266 Antibody Titration: 0.2-1 ug/ml; ELISA Titer: 1: 1562500; Positive Control: HT1080 cell lysate. ZNF266 is supported by BioGPS gene expression data to be expressed in HT1080