

## Product datasheet for **TA343628**

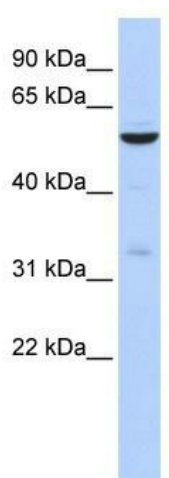
### ZNF266 Rabbit Polyclonal Antibody

#### Product data:

|                         |   |
|-------------------------|---|
| Product Type:           | Primary Antibodies  |
| Applications:           | WB  |
| Recommended Dilution:   | WB  |
| Reactivity:             | Human   |
| Host:                   | Rabbit  |
| Isotype:                | IgG   |
| Clonality:              | Polyclonal  |
| Immunogen:              | The immunogen for anti-ZNF266 antibody: synthetic peptide directed towards the N terminal of human ZNF266. Synthetic peptide located within the following region:<br>MLENYKNLATVGYQLFKPSLISWLEQEESRTVQRGDFQASEWKVQLKTKE |
| Formulation:            | Liquid. Purified antibody supplied in 1x PBS buffer with 0.09% (w/v) sodium azide and 2% sucrose.   |
| Purification:           | Affinity Purified   |
| Conjugation:            | Unconjugated  |
| Storage:                | Store at -20°C as received.   |
| Stability:              | Stable for 12 months from date of receipt.  |
| Predicted Protein Size: | 62 kDa  |
| Gene Name:              | zinc finger protein 266   |
| Database Link:          | <a href="#">NP_006622</a><br><a href="#">Entrez Gene 10781 Human</a><br><a href="#">Q14584</a>  |
| Background:             | Located on chromosome 19, ZNF266 is part of the Kruppel-related zinc finger gene family.  |
| Synonyms:               | HZF1  |
| Note:                   | Immunogen Sequence Homology: Human: 100%  |
| Protein Families:       | Transcription Factors   |



[View online »](#)

**Product images:**

WB Suggested Anti-ZNF266 Antibody Titration:  
0.2-1 ug/ml; ELISA Titer: 1: 62500; Positive  
Control: 721\_B cell lysate. ZNF266 is supported by  
BioGPS gene expression data to be expressed in  
721\_B