

Product datasheet for **TA343625**

USP39 Rabbit Polyclonal Antibody

Product data:

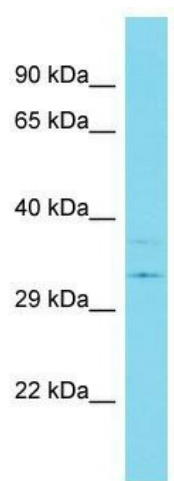
Product Type:	Primary Antibodies
Applications:	WB
Recommended Dilution:	WB
Reactivity:	Human
Host:	Rabbit
Isotype:	IgG
Clonality:	Polyclonal
Immunogen:	The immunogen for Anti-USP39 antibody is: synthetic peptide directed towards the C-terminal region of Human USP39. Synthetic peptide located within the following region: YRIHVLHHGTGKWYELQDLQVTDILPQMILTSEAYIQWKRRDNDNDETNNQ
Formulation:	Liquid. Purified antibody supplied in 1x PBS buffer with 0.09% (w/v) sodium azide and 2% sucrose. <i>Note that this product is shipped as lyophilized powder to China customers.</i>
Purification:	Affinity Purified
Conjugation:	Unconjugated
Storage:	Store at -20°C as received.
Stability:	Stable for 12 months from date of receipt.
Predicted Protein Size:	55 kDa
Gene Name:	ubiquitin specific peptidase 39
Database Link:	NP_001243654 Entrez Gene 10713 Human Q53GS9
Background:	The function of this protein remains unknown.
Synonyms:	65K; CGI-21; HSPC332; SAD1; SNRNP65
Note:	Immunogen Sequence Homology: Dog: 100%; Pig: 100%; Rat: 100%; Horse: 100%; Human: 100%; Mouse: 100%; Bovine: 100%; Rabbit: 100%; Guinea pig: 86%
Protein Families:	Protease



[View online »](#)

Protein Pathways: Spliceosome

Product images:



Host: Rabbit; Target Name: USP39; Sample
Tissue: Breast Tumor lysates; Antibody Dilution:
1.0 ug/ml