

Product datasheet for **TA343623**

Advillin (AVIL) Rabbit Polyclonal Antibody

Product data:

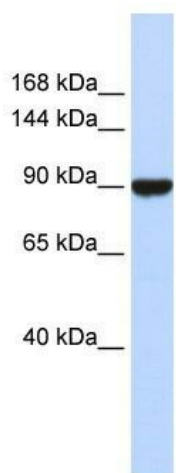
Product Type:	Primary Antibodies
Applications:	WB
Recommended Dilution:	WB
Reactivity:	Human
Host:	Rabbit
Isotype:	IgG
Clonality:	Polyclonal
Immunogen:	The immunogen for anti-AVIL antibody: synthetic peptide directed towards the middle region of human AVIL. Synthetic peptide located within the following region: QELPEDVNPAAKKENYLSEQDFVSVFGITRGQFAALPGWKQLQMKKEKGLF
Formulation:	Liquid. Purified antibody supplied in 1x PBS buffer with 0.09% (w/v) sodium azide and 2% sucrose.
Purification:	Affinity Purified
Conjugation:	Unconjugated
Storage:	Store at -20°C as received.
Stability:	Stable for 12 months from date of receipt.
Predicted Protein Size:	92 kDa
Gene Name:	advillin
Database Link:	NP_006567 Entrez Gene 10677 Human O75366
Background:	AVIL is a member of the gelsolin/villin family of actin regulatory proteins. This protein has structural similarity to villin. It binds actin and may play a role in the development of neuronal cells that form ganglia. The protein encoded by this gene is a member of the gelsolin/villin family of actin regulatory proteins. This protein has structural similarity to villin. It binds actin and may play a role in the development of neuronal cells that form ganglia.
Synonyms:	ADVIL; DOC6; p92



[View online »](#)

Note: Immunogen Sequence Homology: Dog: 100%; Horse: 100%; Human: 100%; Bovine: 100%; Pig: 93%; Rabbit: 93%; Rat: 92%; Mouse: 92%; Guinea pig: 85%

Product images:



WB Suggested Anti-AVIL Antibody Titration: 0.2-1 ug/ml; ELISA Titer: 1: 312500; Positive Control: Human Liver