

Product datasheet for **TA343621**

LBX1 Rabbit Polyclonal Antibody

Product data:

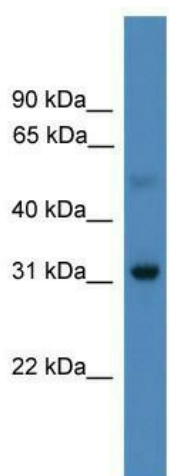
Product Type:	Primary Antibodies
Applications:	WB
Recommended Dilution:	WB, IHC
Reactivity:	Human
Host:	Rabbit
Isotype:	IgG
Clonality:	Polyclonal
Immunogen:	The immunogen for anti-LBX1 antibody: synthetic peptide directed towards the N terminal of human LBX1. Synthetic peptide located within the following region: DHLPPPANSNKPLTPFSIEDILNKPSVRRSYSLCGAAHLLAAADKHAQGG
Formulation:	Liquid. Purified antibody supplied in 1x PBS buffer with 0.09% (w/v) sodium azide and 2% sucrose. <i>Note that this product is shipped as lyophilized powder to China customers.</i>
Purification:	Affinity Purified
Conjugation:	Unconjugated
Storage:	Store at -20°C as received.
Stability:	Stable for 12 months from date of receipt.
Predicted Protein Size:	30 kDa
Gene Name:	ladybird homeobox 1
Database Link:	NP_006553 Entrez Gene 10660 Human P52954
Background:	LBX1 is the transcription factor required for the development of GABAergic interneurons in the dorsal horn of the spinal cord and migration and further development of hypaxial muscle precursor cells for limb muscles, diaphragm and hypoglossal cord.
Synonyms:	homeobox; HPX-6; HPX6; LBX1H
Note:	Immunogen Sequence Homology: Dog: 100%; Pig: 100%; Rat: 100%; Horse: 100%; Human: 100%; Mouse: 100%; Bovine: 100%; Zebrafish: 92%; Rabbit: 86%; Guinea pig: 86%



[View online »](#)

Protein Families: Transcription Factors

Product images:



WB Suggested Anti-LBX1 Antibody Titration: 0.2-1 ug/ml; ELISA Titer: 1: 1562500; Positive Control: PANC1 cell lysate. LBX1 is supported by BioGPS gene expression data to be expressed in PANC1