

Product datasheet for **TA343618**

TFEB Rabbit Polyclonal Antibody

Product data:

Product Type:	Primary Antibodies
Applications:	WB
Recommended Dilution:	WB
Reactivity:	Mouse, Human
Host:	Rabbit
Isotype:	IgG
Clonality:	Polyclonal
Immunogen:	The immunogen for anti-TFEB antibody: synthetic peptide directed towards the C terminal of human TFEB. Synthetic peptide located within the following region: SLSKKDLMLLLDSDLPLASDLLSTMSPEASKASSRRSSFSMEEGDVL
Formulation:	Liquid. Purified antibody supplied in 1x PBS buffer with 0.09% (w/v) sodium azide and 2% sucrose. <i>Note that this product is shipped as lyophilized powder to China customers.</i>
Purification:	Protein A purified
Conjugation:	Unconjugated
Storage:	Store at -20°C as received.
Stability:	Stable for 12 months from date of receipt.
Predicted Protein Size:	53 kDa
Gene Name:	transcription factor EB
Database Link:	NP_009093 Entrez Gene 21425 Mouse Entrez Gene 7942 Human P19484
Background:	TFEB is a member of the basic Helix-Loop-Helix-Zipper family of transcription factors. TFEB can bind DNA as a homodimer or as a heterodimer with three closely related family members: MITF, TFE3 and TFEC. The t(6;11)(p21;q12), a translocation recently been shown to result in fusion of Alpha, a gene on 11q12, with the transcription factor gene TFEB on 6p21. This translocation ultimately leads to the development of Renal carcinomas.
Synonyms:	ALPHATFEB; BHLHE35; TCFEB

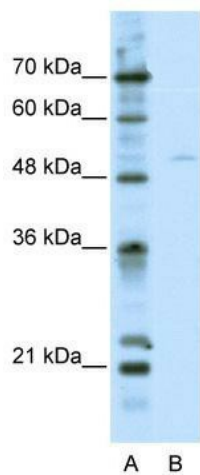


[View online »](#)

Note: Immunogen Sequence Homology: Dog: 100%; Pig: 100%; Rat: 100%; Horse: 100%; Human: 100%; Mouse: 100%; Yeast: 100%; Bovine: 100%; Rabbit: 100%; Guinea pig: 100%; Goat: 92%; Zebrafish: 91%; Sheep: 85%

Protein Families: Druggable Genome, Transcription Factors

Product images:



WB Suggested Anti-TFEB Antibody Titration: 2.5 ug/ml; ELISA Titer: 1: 312500; Positive Control: HepG2 cell lysate