

## Product datasheet for **TA343616**

### Rel B (RELB) Rabbit Polyclonal Antibody

#### Product data:

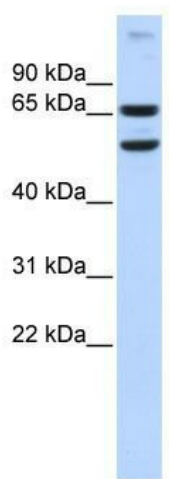
Product Type:	Primary Antibodies
Applications:	WB
Recommended Dilution:	WB
Reactivity:	Human
Host:	Rabbit
Isotype:	IgG
Clonality:	Polyclonal
Immunogen:	The immunogen for anti-RELB antibody: synthetic peptide directed towards the N terminal of human RELB. Synthetic peptide located within the following region: LRSGPASGPSVPTGRAMPSRRVARPPAAPELGALGSPDLSSLSLAVSRST
Formulation:	Liquid. Purified antibody supplied in 1x PBS buffer with 0.09% (w/v) sodium azide and 2% sucrose. <i>Note that this product is shipped as lyophilized powder to China customers.</i>
Purification:	Affinity Purified
Conjugation:	Unconjugated
Storage:	Store at -20°C as received.
Stability:	Stable for 12 months from date of receipt.
Predicted Protein Size:	62 kDa
Gene Name:	RELB proto-oncogene, NF-kB subunit
Database Link:	<a href="#">NP_006500</a> <a href="#">Entrez Gene 5971 Human Q01201</a>
Background:	RELB neither associates with DNA nor with RELA/p65 or REL. It stimulates promoter activity in the presence of NFKB2/p49.
Synonyms:	I-REL; IREL; REL-B
Note:	Immunogen Sequence Homology: Dog: 100%; Human: 100%; Pig: 86%; Guinea pig: 86%
Protein Families:	Druggable Genome, Transcription Factors



[View online »](#)

Protein Pathways: MAPK signaling pathway

### Product images:



WB Suggested Anti-RELB Antibody Titration: 0.2-1 ug/ml; ELISA Titer: 1: 62500; Positive Control: Human brain