

## Product datasheet for **TA343615**

### HIC1 Rabbit Polyclonal Antibody

#### Product data:

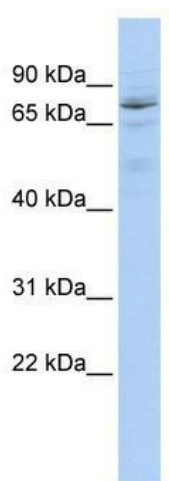
Product Type:	Primary Antibodies
Applications:	WB
Recommended Dilution:	WB
Reactivity:	Human
Host:	Rabbit
Isotype:	IgG
Clonality:	Polyclonal
Immunogen:	The immunogen for anti-HIC1 antibody: synthetic peptide directed towards the middle region of human HIC1. Synthetic peptide located within the following region: GETPIAVMGEFANLATSLSNPLDPDKDEEEEEEESEDELQPDISLAAGGE
Formulation:	Liquid. Purified antibody supplied in 1x PBS buffer with 0.09% (w/v) sodium azide and 2% sucrose. <i>Note that this product is shipped as lyophilized powder to China customers.</i>
Purification:	Affinity Purified
Conjugation:	Unconjugated
Storage:	Store at -20°C as received.
Stability:	Stable for 12 months from date of receipt.
Predicted Protein Size:	74 kDa
Gene Name:	hypermethylated in cancer 1
Database Link:	<a href="#">NP_006488</a> <a href="#">Entrez Gene 3090 Human Q14526</a>
Background:	HIC1 is a transcriptional repressor. HIC1 may act as a tumor suppressor. HIC1 may be involved in development of head, face, limbs and ventral body wall. Defects in HIC1 may be a cause of the facial dysmorphism and additional birth defects (except for lissencephaly) seen in the contiguous gene disorder Miller-Dieker syndrome (MDS), like defective development of the nose, jaws, extremities, gastrointestinal tract, and kidney.
Synonyms:	hic-1; ZBTB29; ZNF901



[View online »](#)

**Note:** Immunogen Sequence Homology: Dog: 100%; Pig: 100%; Horse: 100%; Human: 100%; Bovine: 100%; Guinea pig: 100%; Rat: 93%; Mouse: 93%

### Product images:



WB Suggested Anti-HIC1 Antibody Titration: 0.2-1 ug/ml; ELISA Titer: 1: 1562500; Positive Control: 721\_B cell lysate. HIC1 is supported by BioGPS gene expression data to be expressed in 721\_B