

Product datasheet for **TA343611**

TRIM16 Rabbit Polyclonal Antibody

Product data:

Product Type:	Primary Antibodies
Applications:	WB
Recommended Dilution:	WB
Reactivity:	Human
Host:	Rabbit
Isotype:	IgG
Clonality:	Polyclonal
Immunogen:	The immunogen for anti-TRIM16 antibody: synthetic peptide directed towards the N terminal of human TRIM16. Synthetic peptide located within the following region: PLPRATAQPPAPLSPDSGSPSPDSGSASPVEEEDVGSSEKLGRETEEQDS
Formulation:	Liquid. Purified antibody supplied in 1x PBS buffer with 0.09% (w/v) sodium azide and 2% sucrose. <i>Note that this product is shipped as lyophilized powder to China customers.</i>
Purification:	Protein A purified
Conjugation:	Unconjugated
Storage:	Store at -20°C as received.
Stability:	Stable for 12 months from date of receipt.
Predicted Protein Size:	64 kDa
Gene Name:	tripartite motif containing 16
Database Link:	NP_006461 Entrez Gene 10626 Human O95361



[View online »](#)

Background:

This gene was identified as an estrogen and anti-estrogen regulated gene in epithelial cells stably expressing estrogen receptor. TRIM16 contains two B box domains and a coiled-coiled region that are characteristic of the B box zinc finger protein family. The proteins of this family have been reported to be involved in a variety of biological processes including cell growth, differentiation and pathogenesis. Its function, however, has not yet been determined. This gene was identified as an estrogen and anti-estrogen regulated gene in epithelial cells stably expressing estrogen receptor. The protein encoded by this gene contains two B box domains and a coiled-coiled region that are characteristic of the B box zinc finger protein family. The proteins of this family have been reported to be involved in a variety of biological processes including cell growth, differentiation and pathogenesis. Expression of this gene was detected in most tissues. Its function, however, has not yet been determined.

Synonyms:

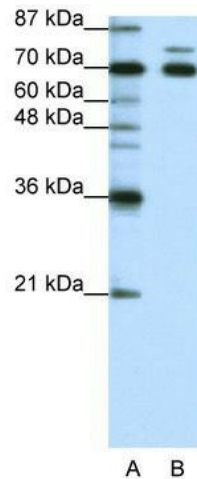
EBBP

Note:

Immunogen Sequence Homology: Human: 100%

Protein Families:

Druggable Genome, Transcription Factors

Product images:

WB Suggested Anti-TRIM16 Antibody Titration:
1.25 ug/ml; ELISA Titer: 1: 62500; Positive Control:
HepG2 cell lysate