

Product datasheet for **TA343609**

ARID3B Rabbit Polyclonal Antibody

Product data:

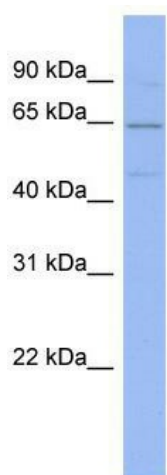
Product Type:	Primary Antibodies
Applications:	WB
Recommended Dilution:	WB
Reactivity:	Human
Host:	Rabbit
Isotype:	IgG
Clonality:	Polyclonal
Immunogen:	The immunogen for anti-ARID3B antibody: synthetic peptide directed towards the N terminal of human ARID3B. Synthetic peptide located within the following region: MEPLQQQQQQQQKQPHLAPLQMDAREKQGQQMREAQFLYAQKLVTPQ
Formulation:	Liquid. Purified antibody supplied in 1x PBS buffer with 0.09% (w/v) sodium azide and 2% sucrose.
Purification:	Affinity Purified
Conjugation:	Unconjugated
Storage:	Store at -20°C as received.
Stability:	Stable for 12 months from date of receipt.
Predicted Protein Size:	60 kDa
Gene Name:	AT-rich interaction domain 3B
Database Link:	NP_006456 Entrez Gene 10620 Human Q8IVW6
Background:	ARID3B is a member of the ARID (AT-rich interaction domain) family of DNA-binding proteins. The protein is homologous with two proteins that bind to the retinoblastoma gene product, and also with the mouse Bright and Drosophila dead ringer proteins. Membe
Synonyms:	BDP; DRIL2
Note:	Immunogen Sequence Homology: Dog: 100%; Pig: 100%; Human: 100%; Bovine: 100%; Horse: 93%; Rat: 86%; Guinea pig: 85%; Mouse: 79%; Rabbit: 79%



[View online »](#)

Protein Families: Stem cell - Pluripotency

Product images:



WB Suggested Anti-ARID3B Antibody Titration:
0.2-1 ug/ml; ELISA Titer: 1: 312500; Positive
Control: ACHN cell lysate