

Product datasheet for **TA343602**

TADA3L (TADA3) Rabbit Polyclonal Antibody

Product data:

Product Type:	Primary Antibodies
Applications:	WB
Recommended Dilution:	WB
Reactivity:	Human
Host:	Rabbit
Isotype:	IgG
Clonality:	Polyclonal
Immunogen:	The immunogen for anti-TADA3L antibody: synthetic peptide directed towards the N terminal of human TADA3L. Synthetic peptide located within the following region: MSELKDCPLQFHDFKSV DHLKVCPRYTAVLARSEDDGIGIEELDTLQLEL
Formulation:	Liquid. Purified antibody supplied in 1x PBS buffer with 0.09% (w/v) sodium azide and 2% sucrose. <i>Note that this product is shipped as lyophilized powder to China customers.</i>
Purification:	Affinity Purified
Conjugation:	Unconjugated
Storage:	Store at -20°C as received.
Stability:	Stable for 12 months from date of receipt.
Predicted Protein Size:	49 kDa
Gene Name:	transcriptional adaptor 3
Database Link:	NP_006345 Entrez Gene 10474 Human O75528
Background:	Many DNA-binding transcriptional activator proteins enhance the initiation rate of RNA polymerase II-mediated gene transcription by interacting functionally with the general transcription machinery bound at the basal promoter. Adaptor proteins are usually
Synonyms:	ADA3; hADA3; NGG1; STAF54; TADA3L

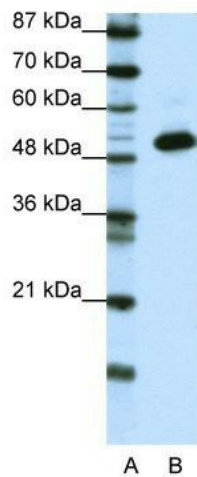


[View online »](#)

Note: Immunogen Sequence Homology: Dog: 100%; Pig: 100%; Rat: 100%; Horse: 100%; Human: 100%; Mouse: 100%; Bovine: 100%; Rabbit: 100%; Zebrafish: 100%; Guinea pig: 100%; Yeast: 90%

Protein Families: Transcription Factors

Product images:



WB Suggested Anti-TADA3L Antibody Titration:
0.2-1 ug/ml; ELISA Titer: 1: 1562500; Positive
Control: Transfected 293T