

Product datasheet for **TA343599**

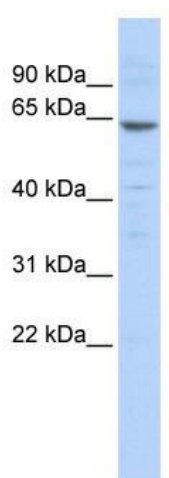
ZNF192 (ZKSCAN8) Rabbit Polyclonal Antibody

Product data:

Product Type:	Primary Antibodies
Applications:	WB
Recommended Dilution:	WB
Reactivity:	Human
Host:	Rabbit
Isotype:	IgG
Clonality:	Polyclonal
Immunogen:	The immunogen for anti-ZNF192 antibody: synthetic peptide directed towards the N terminal of human ZNF192. Synthetic peptide located within the following region: MAEESRKPSAPSPDQTPEEDLVIVKVEEDHGWDQESSLHESNPLGQEVF
Formulation:	Liquid. Purified antibody supplied in 1x PBS buffer with 0.09% (w/v) sodium azide and 2% sucrose.
Purification:	Affinity Purified
Conjugation:	Unconjugated
Storage:	Store at -20°C as received.
Stability:	Stable for 12 months from date of receipt.
Predicted Protein Size:	66 kDa
Gene Name:	zinc finger with KRAB and SCAN domains 8
Database Link:	NP_006289 Entrez Gene 7745 Human Q15776
Background:	ZNF192 belongs to the krueppel C2H2-type zinc-finger protein family and contains the conserved SCAN box domain. ZNF192 may be involved in transcriptional regulation.
Synonyms:	LD5-1; ZNF192; ZSCAN40
Note:	Immunogen Sequence Homology: Dog: 100%; Pig: 100%; Goat: 100%; Horse: 100%; Human: 100%; Bovine: 100%; Rabbit: 93%; Guinea pig: 93%; Rat: 86%; Mouse: 79%
Protein Families:	Transcription Factors



[View online »](#)

Product images:

WB Suggested Anti-ZNF192 Antibody Titration:
0.2-1 ug/ml; ELISA Titer: 1: 312500; Positive
Control: 721_B cell lysate; ZKSCAN8 is supported
by BioGPS gene expression data to be expressed
in 721_B