

Product datasheet for **TA343595**

PROP1 Rabbit Polyclonal Antibody

Product data:

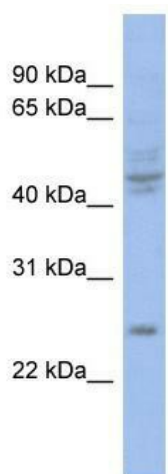
Product Type:	Primary Antibodies
Applications:	WB
Recommended Dilution:	WB
Reactivity:	Human
Host:	Rabbit
Isotype:	IgG
Clonality:	Polyclonal
Immunogen:	The immunogen for anti-PROP1 antibody: synthetic peptide directed towards the middle region of human PROP1. Synthetic peptide located within the following region: PSQPSTGGAFALSHQSEDWYPTLHPAPAGHLPCPPPPMLPLSLEPSKSW
Formulation:	Liquid. Purified antibody supplied in 1x PBS buffer with 0.09% (w/v) sodium azide and 2% sucrose. <i>Note that this product is shipped as lyophilized powder to China customers.</i>
Purification:	Affinity Purified
Conjugation:	Unconjugated
Storage:	Store at -20°C as received.
Stability:	Stable for 12 months from date of receipt.
Predicted Protein Size:	25 kDa
Gene Name:	PROP paired-like homeobox 1
Database Link:	NP_006252 Entrez Gene 5626 Human O75360
Background:	PROP1 has both DNA-binding and transcriptional activation ability. Its expression leads to ontogenesis of pituitary gonadotropes, as well as somatotropes, lactotropes, and caudomedial thyrotropes. Inactivating mutations in PROP1 result in deficiencies of
Synonyms:	CPHD2; PROP-1
Note:	Immunogen Sequence Homology: Dog: 100%; Pig: 100%; Horse: 100%; Human: 100%; Rat: 90%; Sheep: 90%; Bovine: 90%; Mouse: 79%; Rabbit: 79%



[View online »](#)

Protein Families: Druggable Genome, Transcription Factors

Product images:



WB Suggested Anti-PROP1 Antibody Titration:
0.2-1 ug/ml; ELISA Titer: 1: 1562500; Positive
Control: COLO205 cell lysate; PROP1 is supported
by BioGPS gene expression data to be expressed
in COLO205