

## Product datasheet for **TA343590**

### PEG3 Rabbit Polyclonal Antibody

#### Product data:

Product Type:	Primary Antibodies
Applications:	WB
Recommended Dilution:	WB
Reactivity:	Human
Host:	Rabbit
Isotype:	IgG
Clonality:	Polyclonal
Immunogen:	The immunogen for anti-PEG3 antibody: synthetic peptide directed towards the C terminal of human PEG3. Synthetic peptide located within the following region: FGECSGYIERASTSTGGANQADEKYFKCDVCGQLFNDRLSLARHQNTHTG
Formulation:	Liquid. Purified antibody supplied in 1x PBS buffer with 0.09% (w/v) sodium azide and 2% sucrose. <i>Note that this product is shipped as lyophilized powder to China customers.</i>
Purification:	Affinity Purified
Conjugation:	Unconjugated
Storage:	Store at -20°C as received.
Stability:	Stable for 12 months from date of receipt.
Predicted Protein Size:	181 kDa
Gene Name:	paternally expressed 3
Database Link:	<a href="#">NP_006201</a> <a href="#">Entrez Gene 5178 Human Q9GZU2</a>
Background:	PEG3 induces apoptosis in cooperation with SIAH1A and acts as a mediator between TP53/p53 and BAX in a neuronal death pathway that is activated by DNA damage. PEG3 acts synergistically with TRAF2 and inhibits TNF induced apoptosis through activation of NF-kappa-B. PEG3 also possesses a tumor suppressing activity in glioma cells.
Synonyms:	PW1; ZKSCAN22; ZNF904; ZSCAN24

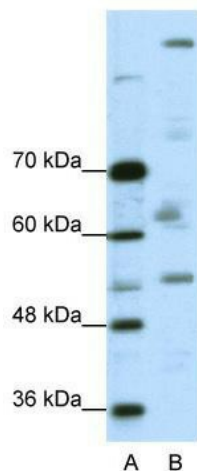


[View online »](#)

**Note:** Immunogen Sequence Homology: Dog: 100%; Pig: 100%; Horse: 100%; Human: 100%; Bovine: 100%; Rabbit: 100%; Rat: 93%; Mouse: 93%

**Protein Families:** Transcription Factors

**Product images:**



WB Suggested Anti-PEG3 Antibody Titration: 0.2-1 ug/ml; ELISA Titer: 1: 312500; Positive Control: A204 cell lysate; PEG3 is strongly supported by BioGPS gene expression data to be expressed in Human A204 cells